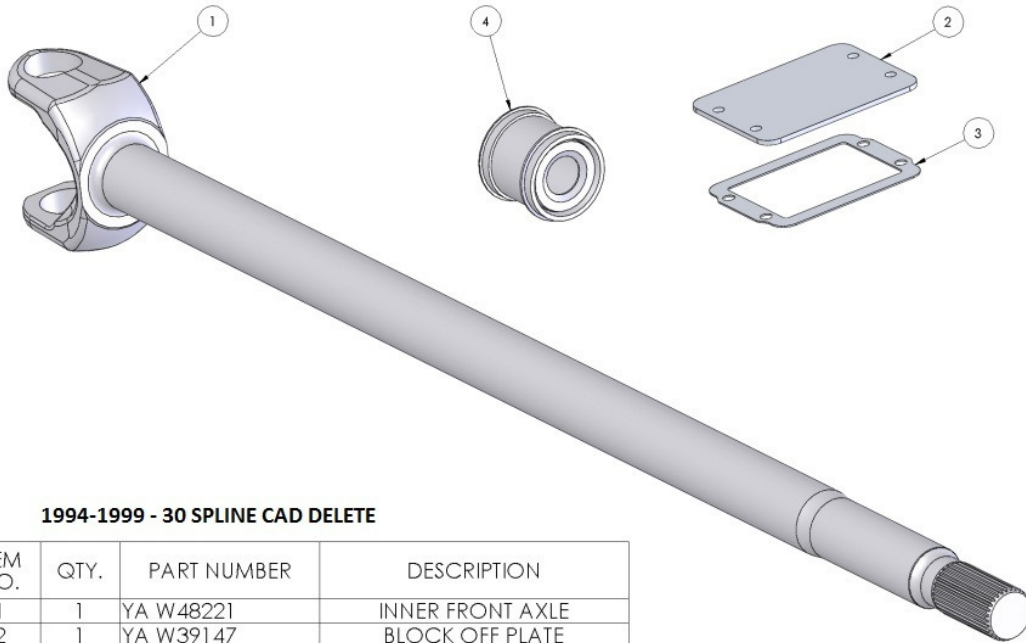


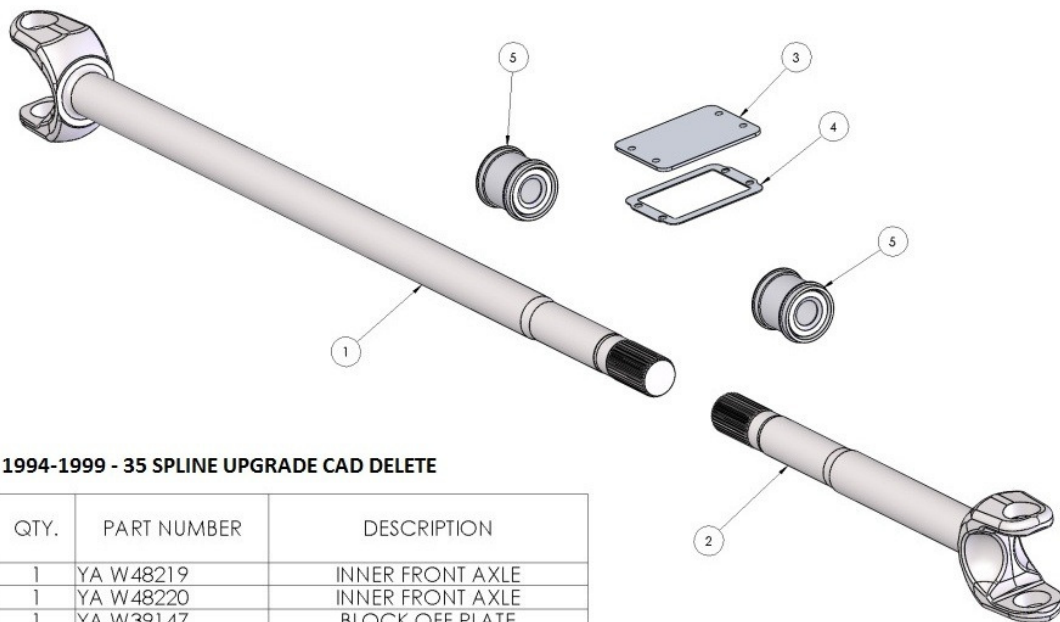


CAD Delete Kit
Installation Instructions
1994-1999 Dodge 2500/3500



1994-1999 - 30 SPLINE CAD DELETE

ITEM NO.	QTY.	PART NUMBER	DESCRIPTION
1	1	YA W48221	INNER FRONT AXLE
2	1	YA W39147	BLOCK OFF PLATE
3	1	YCGD30-DISCO	PLATE GASKET
4	1	YMSM1001	AXLE SEAL



1994-1999 - 35 SPLINE UPGRADE CAD DELETE

ITEM NO.	QTY.	PART NUMBER	DESCRIPTION
1	1	YA W48219	INNER FRONT AXLE
2	1	YA W48220	INNER FRONT AXLE
3	1	YA W39147	BLOCK OFF PLATE
4	1	YCGD30-DISCO	PLATE GASKET
5	2	YMSM1001	AXLE SEAL

CAD Delete Kit Installation Instructions for 1994-1999 Dodge 2500/3500

DRW = Dual Rear Wheel

SRW = Single Rear Wheel

Before starting, make sure you have all the proper tools and safety equipment!

- Read instructions carefully before starting. Do not attempt to install the kit unless you are an equipped and experienced mechanic.
- Always wear safety goggles and proper safety gear when dealing with tools and chemicals.
- Check parts list carefully. If any components are missing, contact your Yukon distributor.
- Inspect all parts. If any parts appear to be damaged, contact your Yukon distributor for replacements. Any modified, neglected, abused or improperly installed parts will NOT be accepted or replaced.

TOOLS REQUIRED

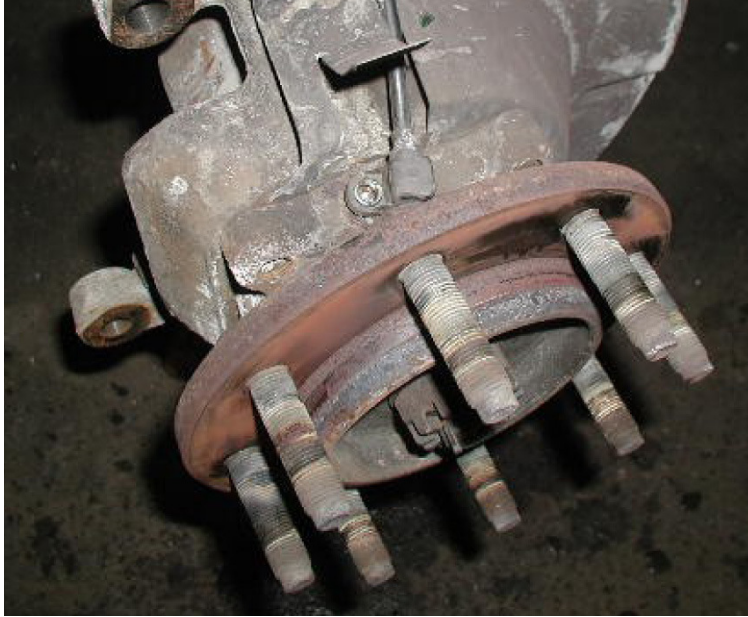
- 12mm Allen wrench or socket
- 22mm (or 7/8") wrench and socket
- 14 mm 12 point socket
- 1-1/16" socket
- 4 point 1 ton spanner socket
- Die grinder w/flap wheel, or equivalent
- 1/8" NPT tap
- Common air or hand tools

INSTALLATION

- Clean and inspect all parts.
- Make sure vehicle is in park, with the emergency brake on.
- Block the rear tires.
- Lift and support the front axle with jack stands.
- Begin process to remove outer axles.
- Remove front wheels.
- Remove brake calipers and allow them to hang from vehicle. Do not hang calipers from brake hoses. It is NOT necessary to disconnect the brake hoses.
- Remove DRW adapters. (DRW trucks only)

INSTALLATION (cont.)

- If the vehicle is equipped with ABS, remove the ABS Sensor bolts from the back of the steering knuckle.
- Pull Sensor straight out of unit bearing. Take care not to damage the sensor.



- Remove (4) factory bolts retaining the unit bearing to the steering knuckle.
- Remove unit bearing assembly. This may take some force depending on amount of rust, salt or corrosion present. The axle shafts will be removed with the unit bearing. Take caution removing the shaft assembly not to damage the inner shaft seals.



INSTALLATION (cont.)

- Remove the OEM U-joint and inner axle from the outer axle. Check the OEM U-joints for excessive play or wear. Replace shaft U-joints if necessary. If being reused the U-joints may be left pressed into the inner axle shaft. Shaft assembly may need to be removed from the unit bearing for U-joint removal. Remove cotter pin and unit bearing retaining nut using a 1-11/16" socket.
- Remove U-joint clips from the inner axle.

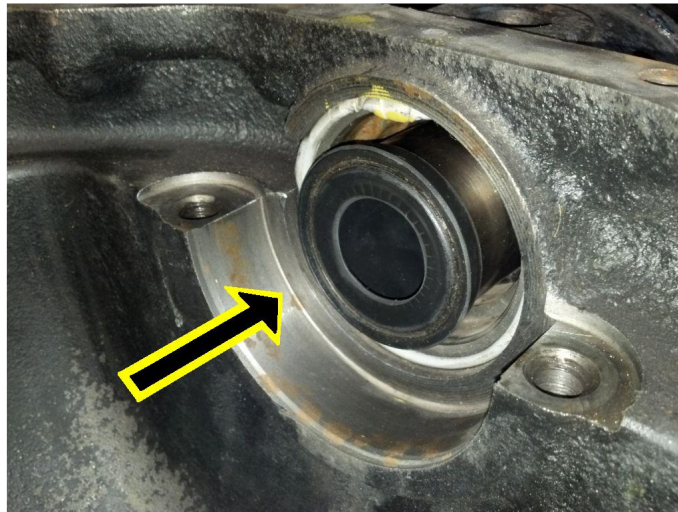


- Press the U-joint out of the OEM inner axle.
- Install the stub axle onto the new inner axle.
- To remove the CAD start by removing the collar. CAD seal & bearing removal is optional, but recommended. The seal is located outboard of the CAD on the long side axle tube. The bearing is located inboard of the CAD.
- Remove the differential cover and drain oil from housing.
- Mark carrier bearing caps if needed and then remove caps and the carrier.
- There is an additional seal located next to the carrier on the CAD side of the housing. Drive the seal in towards the center section to remove.
- Drill and tap a new 1/8" NPT hole in the housing for the breather vent. Avoid the location directly above the ring gear to prevent fluid loss through the vent.
- Remove the factory breather and reroute the breather hose to new location.
- Prepare the axle tubes and the seal(s) included in kit for installation.

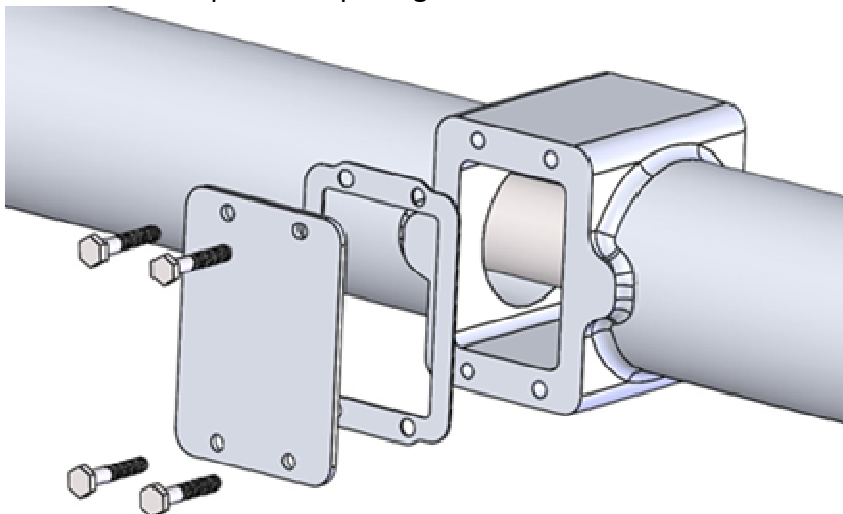


INSTALLATION (cont.)

- Before installing the seal(s), clean and de-bur the inside of the axle tube on the right. This is the side that does not have a place machined for a seal. (A flap wheel on a die grinder or by hand)
- Fill the seal with a low melting point drum brake wheel bearing grease. A coating of 1/8" – 3/16" is sufficient. Then run bead of hardening RTV on the outside diameter, just inside of rubber barbs.
- Allow time for the RTV to start setting up then install the seal into the end of the axle tube (Closest to carrier)



- Press the seal into the end of the tube, make sure the seal is set into the end of the tube 1/4".
- Replace the carrier and carrier caps and torque to factory spec.
- Install block off plate and plate gasket.



INSTALLATION (cont.)

- Re-install axles, unit bearings, abs sensors, brakes, and wheels.
- Torque to factory specs.
- Re-install differential cover and refill with the proper oil.