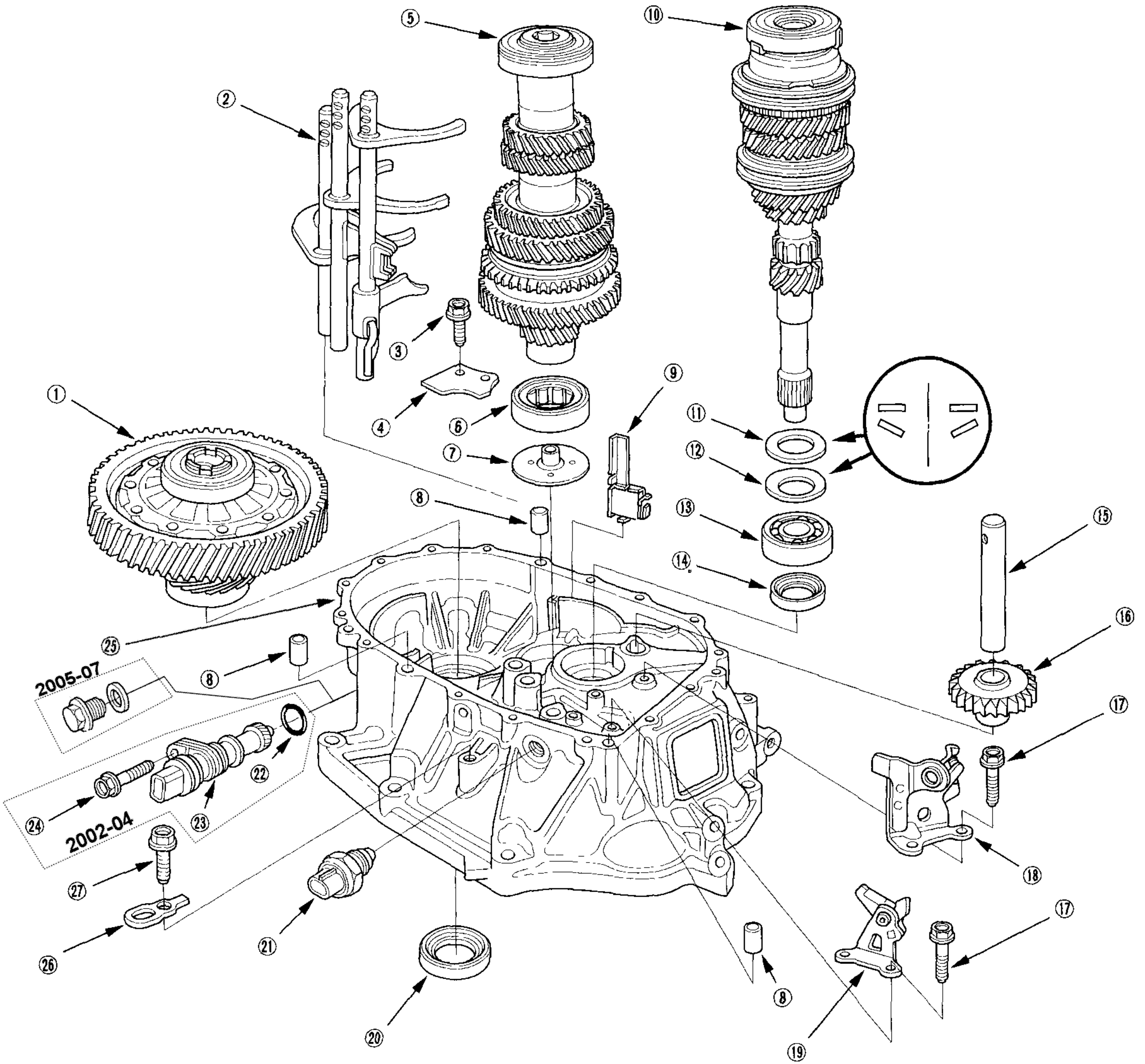


# 02-06 Acura RSX 5 speed 03-07 Honda Accord 5 speed BK483



① DIFFERENTIAL ASSEMBLY

② SHIFT FORK ASSEMBLY

③ 6 mm FLANGE BOLT  
12 N·m (1.2 kgf·m, 9 lbf·ft)

④ BEARING SET PLATE

⑤ COUNTERSHAFT ASSEMBLY

⑥ NEEDLE BEARING

⑦ OIL GUIDE PLATE C

⑧ 14 x 20 mm DOWEL PIN

⑨ MAGNET

⑩ MAINSHAFT ASSEMBLY

⑪ 28 mm WASHER

⑫ 28 mm SPRING WASHER

⑬ BALL BEARING

⑭ 28 x 43 x 7 mm OIL SEAL  
Replace.

⑮ REVERSE GEAR SHAFT

⑯ REVERSE IDLER GEAR

⑰ 6 mm SPECIAL BOLT  
15 N·m (1.5 kgf·m, 11 lbf·ft)

⑱ REVERSE SHIFT FORK

⑲ REVERSE LOCK CAM

⑳ 35 x 58 x 8 mm OIL SEAL  
Replace.

㉑ BACK-UP LIGHT SWITCH  
29 N·m (3.0 kgf·m, 22 lbf·ft)

㉒ O-RING  
Replace.

㉓ VEHICLE SPEED SENSOR (VSS)

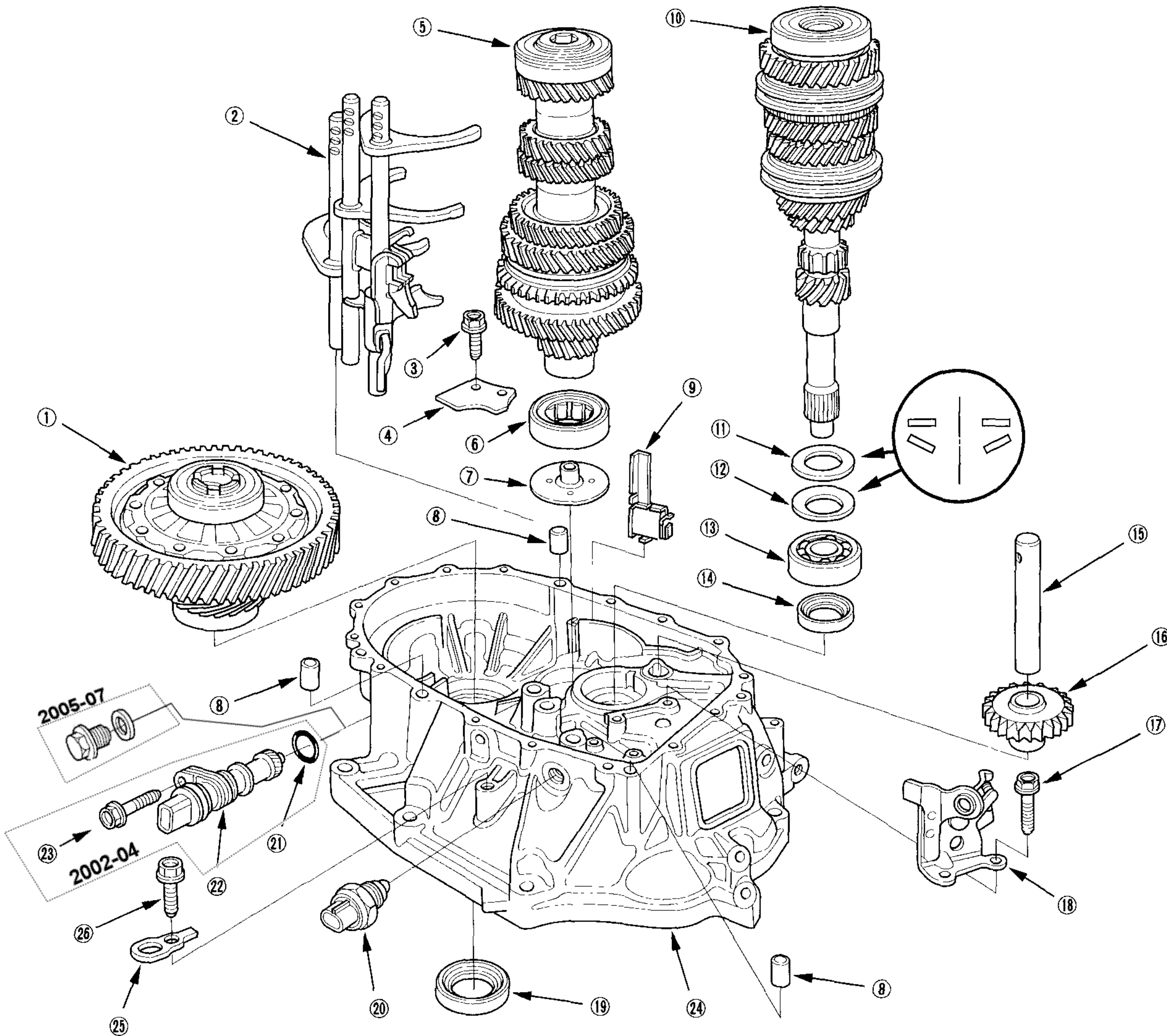
㉔ 8 mm FLANGE BOLT  
22 N·m (2.2 kgf·m, 16 lbf·ft)

㉕ CLUTCH HOUSING

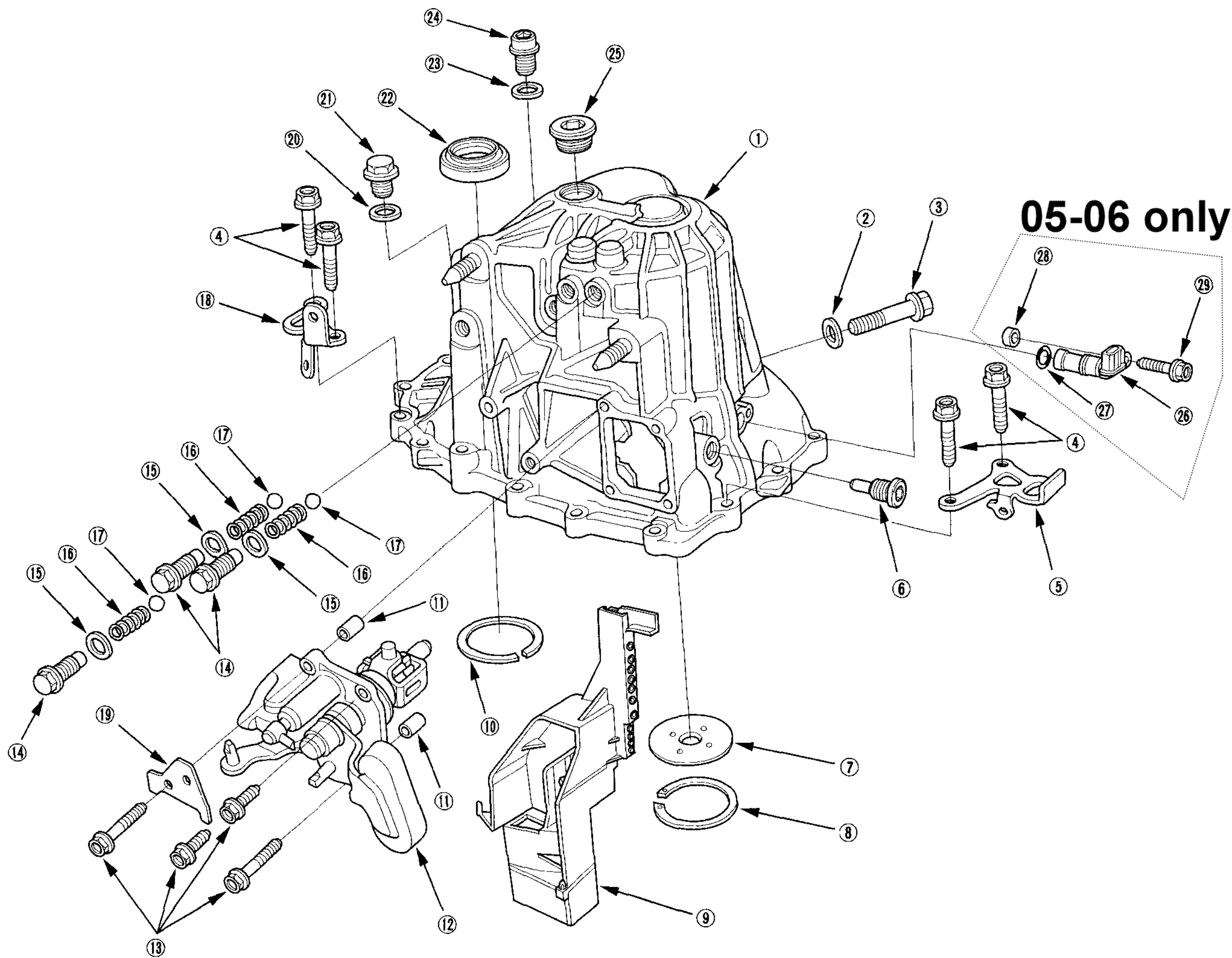
㉖ TRANSMISSION HANGER

㉗ 10 mm FLANGE BOLT  
44 N·m (4.5 kgf·m, 33 lbf·ft)

# 02-06 Acura RSX 6 speed BK483



- |  |  |   |
|--|--|---|
| ① DIFFERENTIAL ASSEMBLY                            | ⑫ 28 mm SPRING WASHER                                | ⑳ BACK-UP LIGHT SWITCH<br>29 N·m (3.0 kgf·m, 22 lbf·ft) |
| ② SHIFT FORK ASSEMBLY                              | ⑬ BALL BEARING                                       | ㉑ O-RING<br>Replace.                                    |
| ③ 6 mm FLANGE BOLT<br>12 N·m (1.2 kgf·m, 9 lbf·ft) | ⑭ 28 x 43 x 7 mm OIL SEAL<br>Replace.                | ㉒ VEHICLE SPEED SENSOR (VSS)                            |
| ④ BEARING SET PLATE                                | ⑮ REVERSE GEAR SHAFT                                 | ㉓ 8 mm FLANGE BOLT<br>22 N·m (2.2 kgf·m, 16 lbf·ft)     |
| ⑤ COUNTERSHAFT ASSEMBLY                            | ⑯ REVERSE IDLER GEAR                                 | ㉔ CLUTCH HOUSING  |
| ⑥ NEEDLE BEARING                                   | ⑰ 6 mm SPECIAL BOLT<br>15 N·m (1.5 kgf·m, 11 lbf·ft) | ㉕ TRANSMISSION HANGER                                   |
| ⑦ OIL GUIDE PLATE C                                | ⑱ REVERSE SHIFT FORK                                 | ㉖ 10 mm FLANGE BOLT<br>44 N·m (4.5 kgf·m, 33 lbf·ft)    |
| ⑧ 14 x 20 mm DOWEL PIN                             | ㉚ 35 x 58 x 8 mm OIL SEAL<br>Replace.                |   |
| ⑨ MAGNET   |  |   |
| ⑩ MAINSHAFT ASSEMBLY                               |  |   |
| ⑪ 28 mm WASHER                                     |  |   |



① TRANSMISSION HOUSING

② 10 mm WASHER  
Replace.

③ 10 mm FLANGE BOLT  
44 N·m (4.5 kgf·m, 33 lbf·ft)

④ 8 mm FLANGE BOLT  
27 N·m (2.8 kgf·m, 20 lbf·ft)

⑤ TRANSMISSION HANGER A

⑥ INTERLOCK BOLT  
39 N·m (4.0 kgf·m, 29 lbf·ft)

⑦ OIL GUIDE PLATE M

⑧ 72 mm SHIM

⑨ OIL GUTTER PLATE

⑩ 80 mm SHIM

⑪ 8 x 14 mm DOWEL PIN

⑫ CHANGE LEVER ASSEMBLY

⑬ 6 mm FLANGE BOLT  
12 N·m (1.2 kgf·m, 8.7 lbf·ft)

⑭ DETENT BOLT  
22 N·m (2.2 kgf·m, 16 lbf·ft)

⑮ 12 mm WASHER  
Replace.

⑯ SPRING

⑰ STEEL BALL

⑱ CLUTCH LINE CLIP BRACKET

⑳ 20 mm WASHER  
Replace.

㉑ FILLER PLUG  
44 N·m (4.5 kgf·m, 33 lbf·ft)

㉒ 40 x 56 x 8 mm OIL SEAL  
Replace.

㉓ 14 mm WASHER  
Replace.

㉔ DRAIN PLUG  
39 N·m (4.0 kgf·m, 29 lbf·ft)

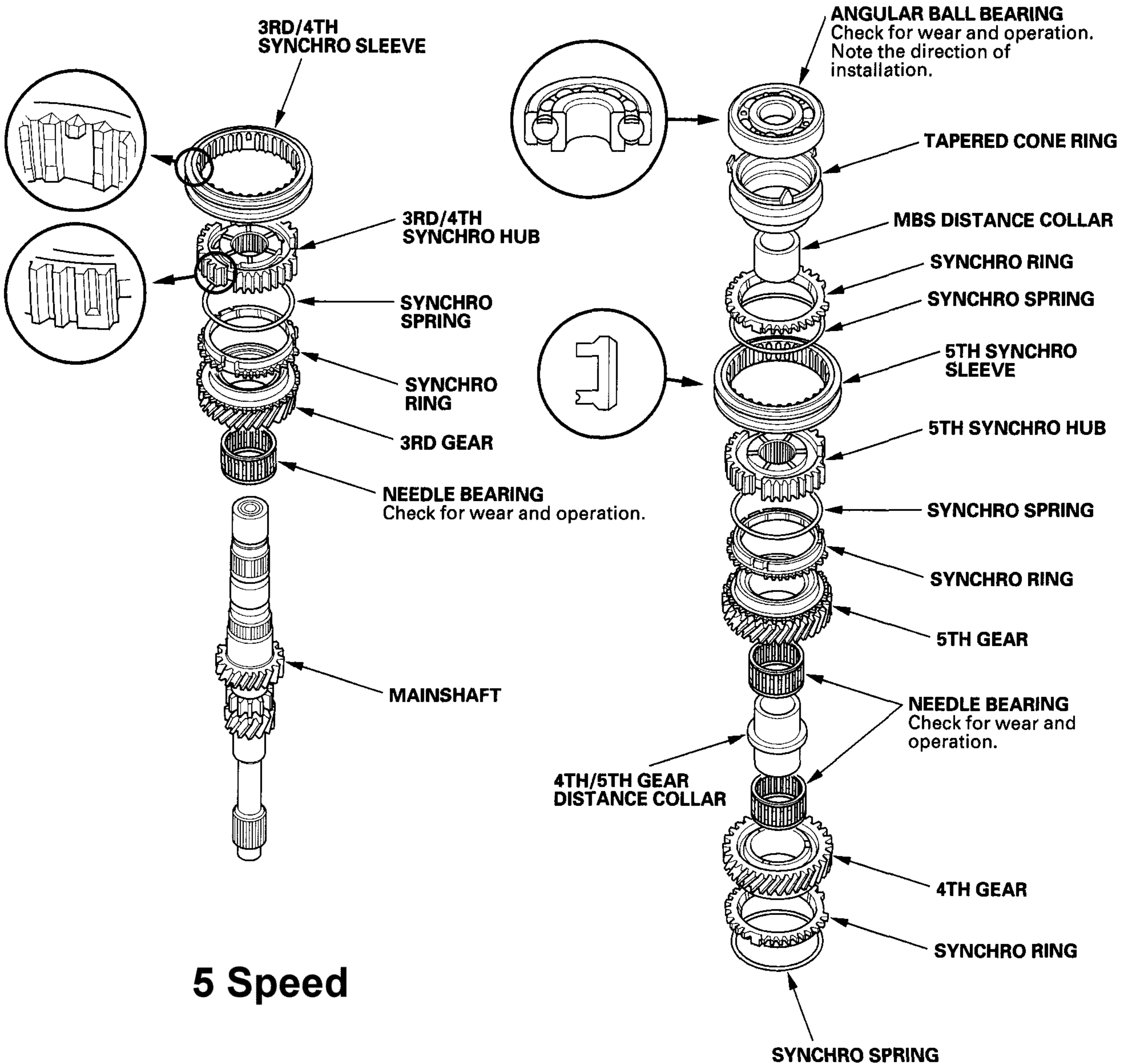
㉕ 32 mm SEALING CAP  
34 N·m (3.5 kgf·m, 25 lbf·ft)

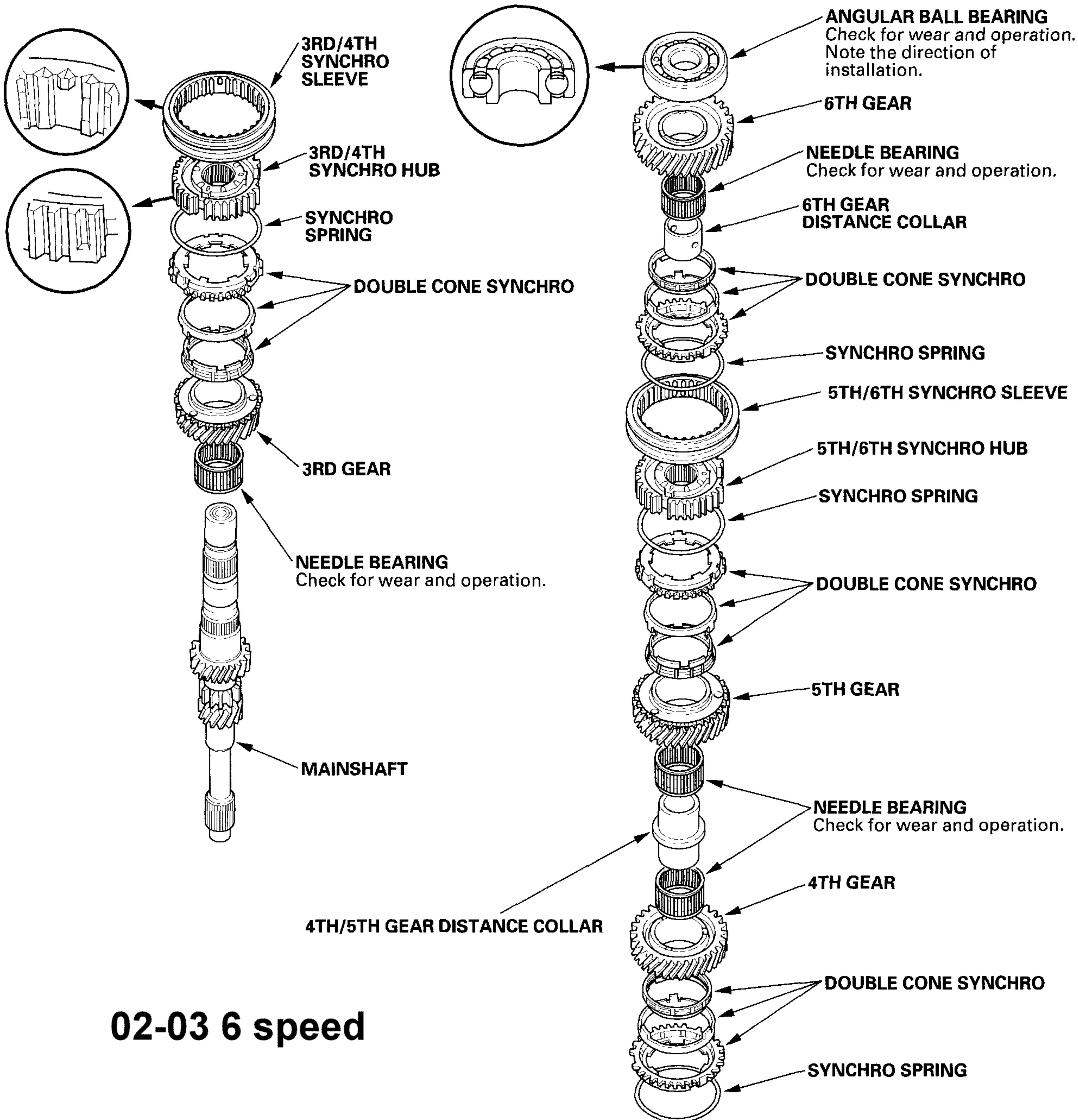
㉖ OUTPUT SHAFT (COUNTERSHAFT)  
SPEED SENSOR

㉗ O-RING  
Replace.

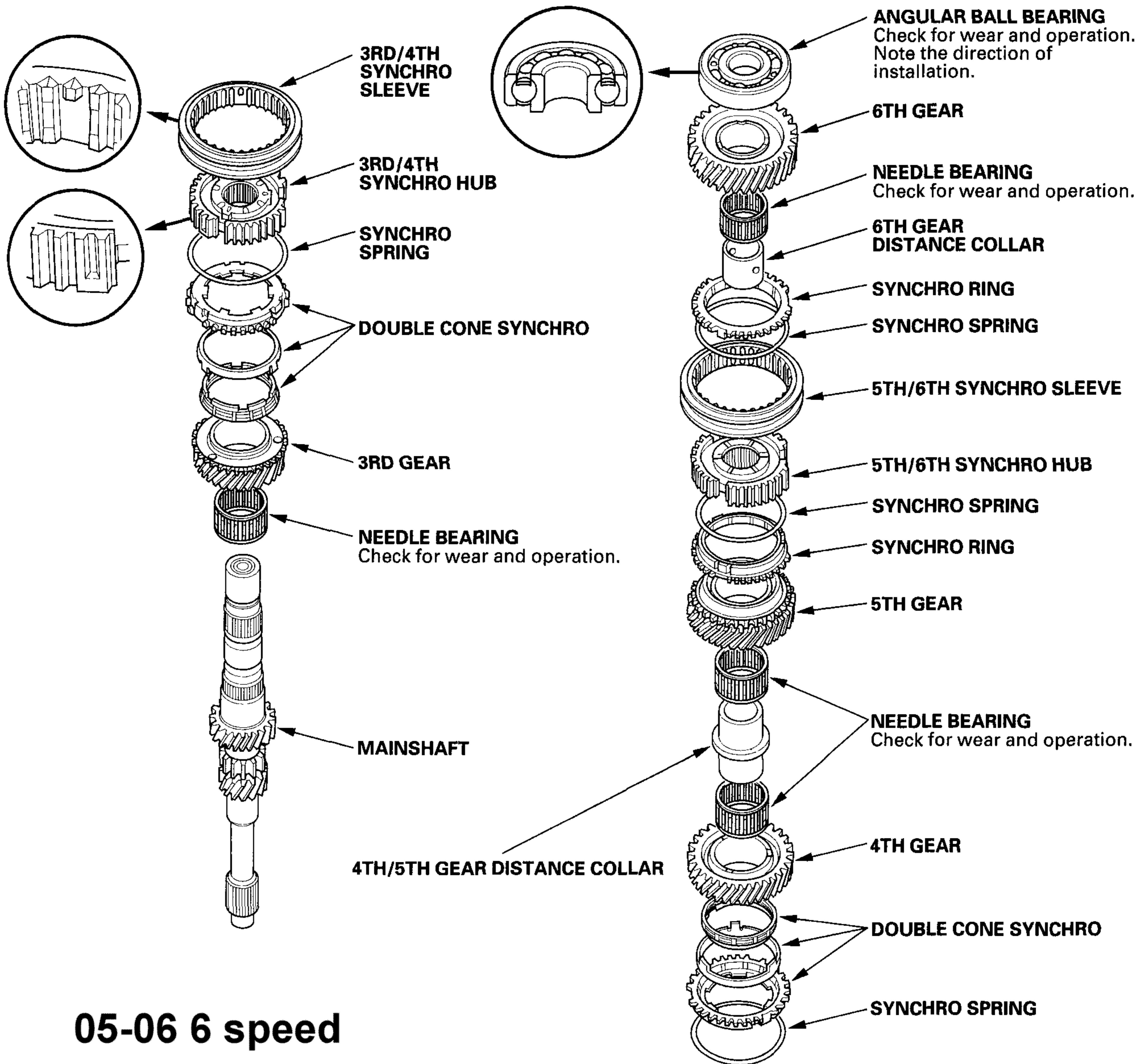
㉘ PLAIN WASHER

㉙ 6 mm FLANGE BOLT  
12 N·m (1.2 kgf·m, 8.7 lbf·ft)

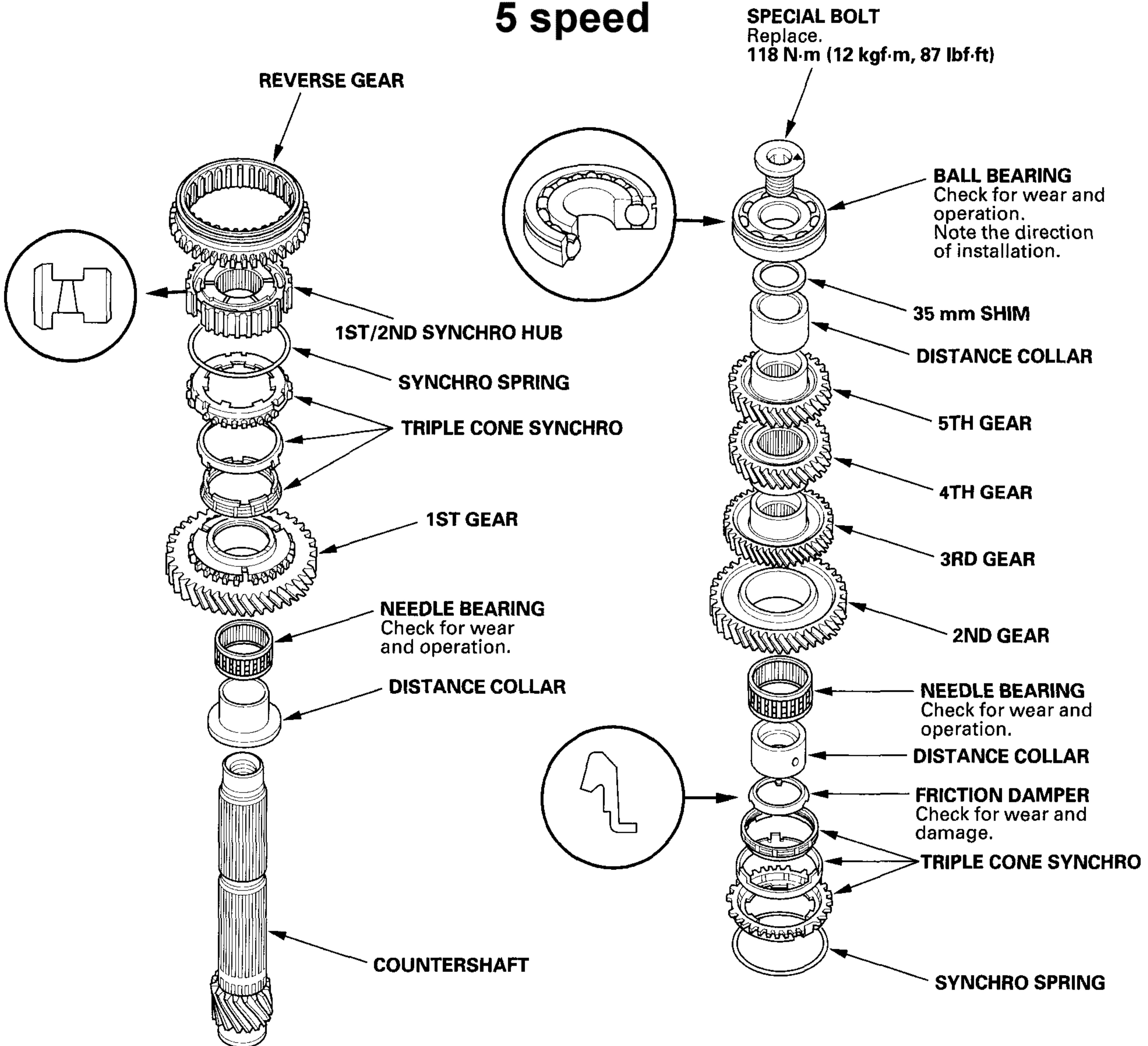




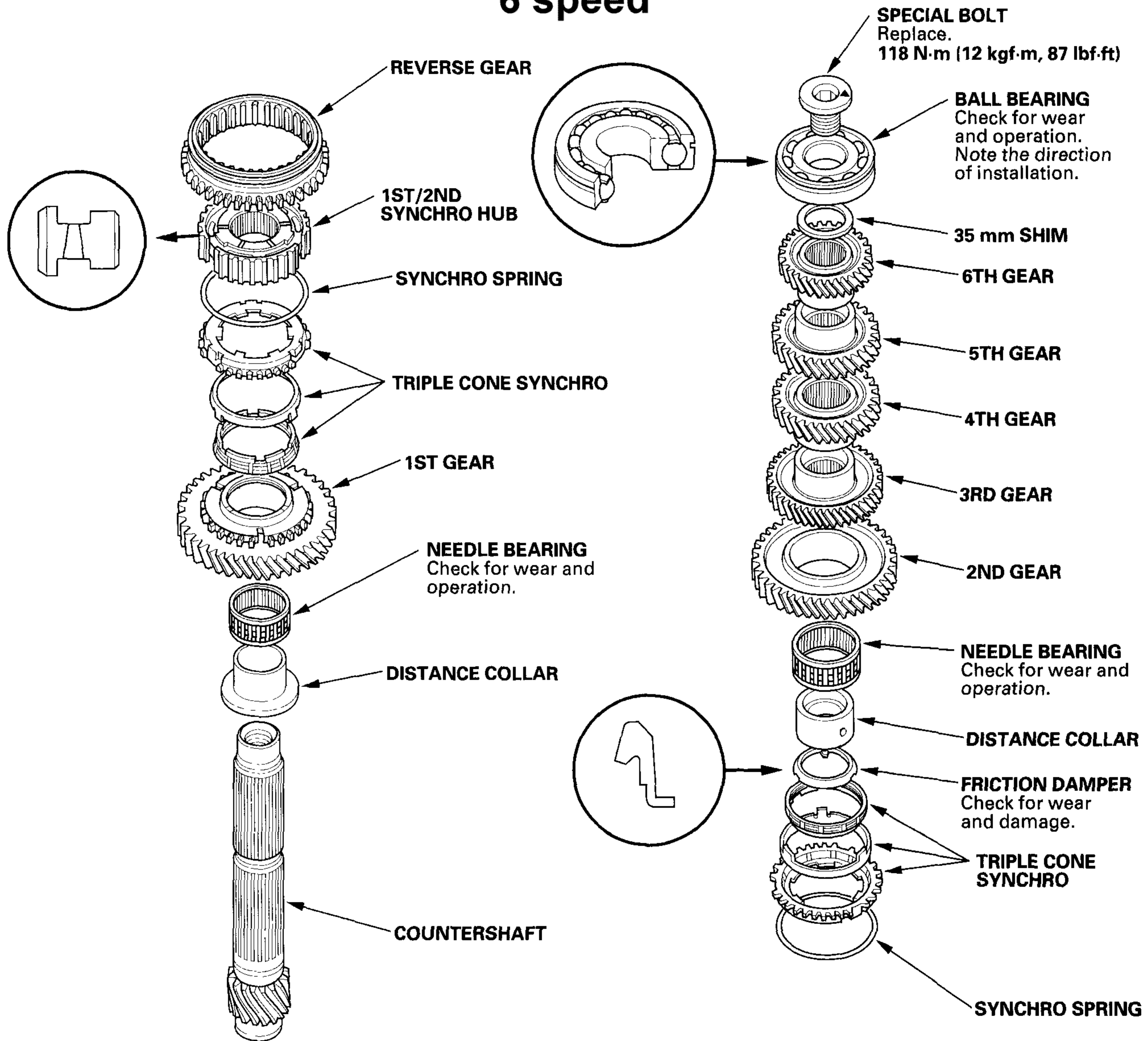
# 02-03 6 speed



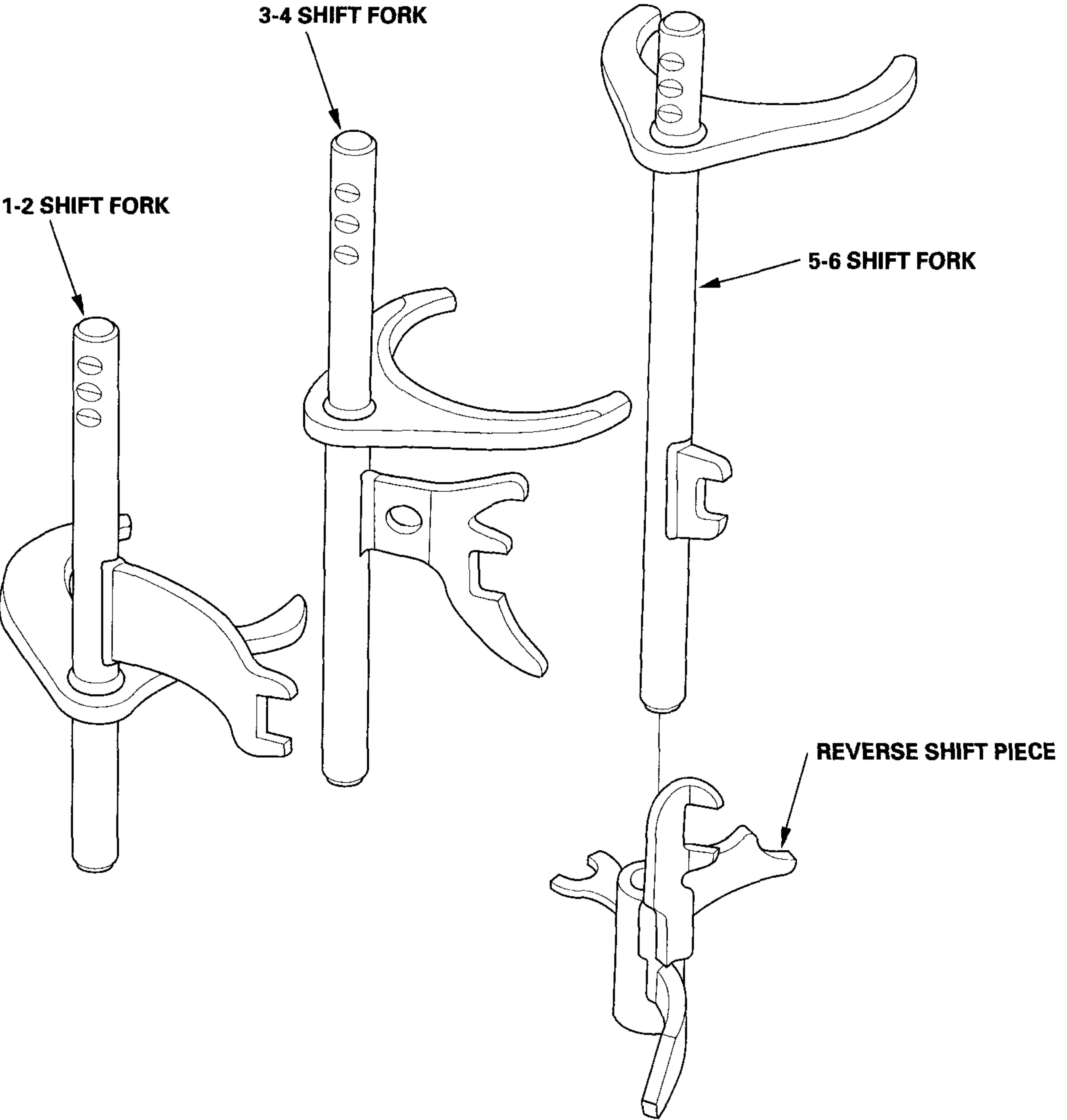
# 5 speed

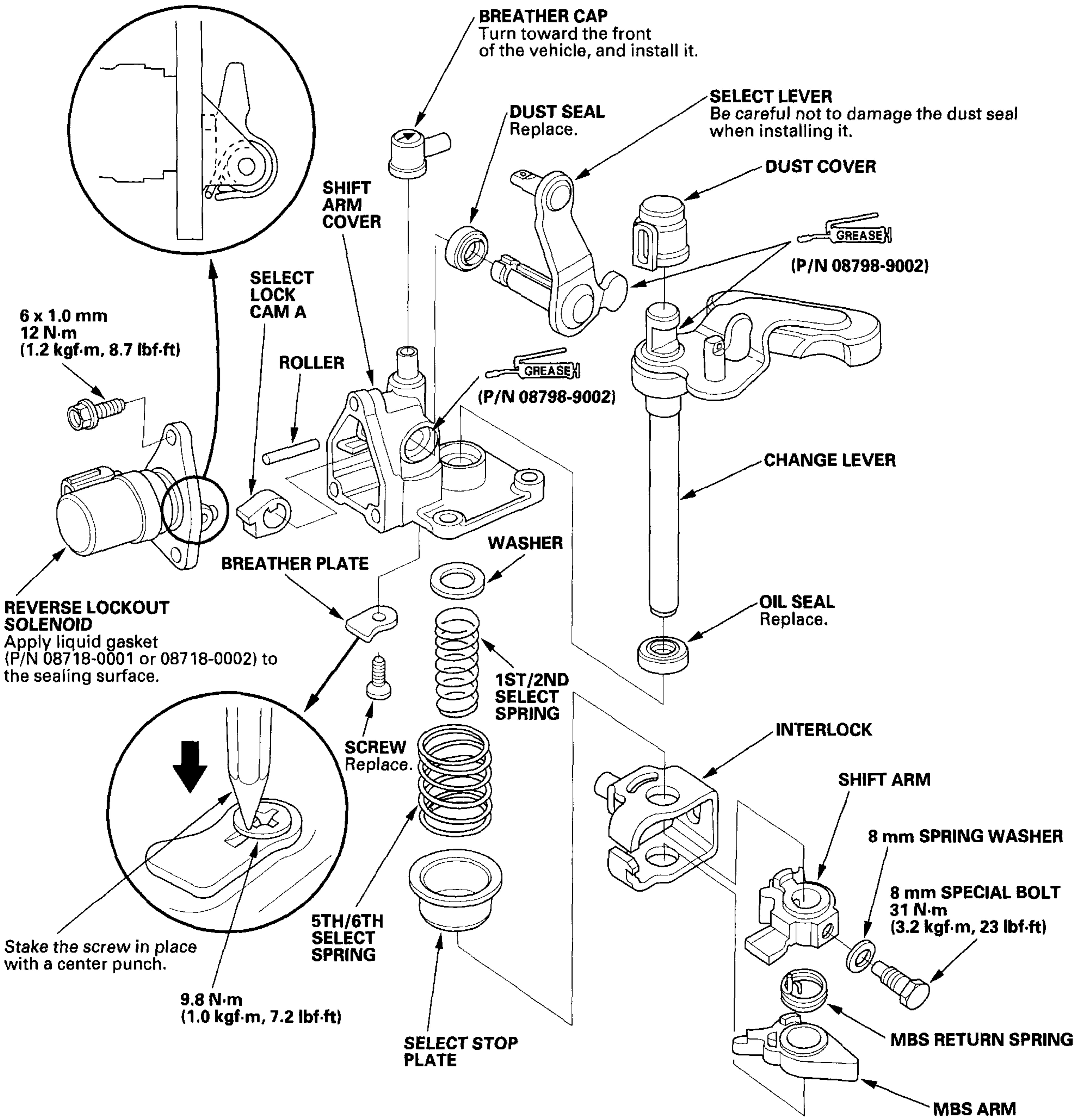


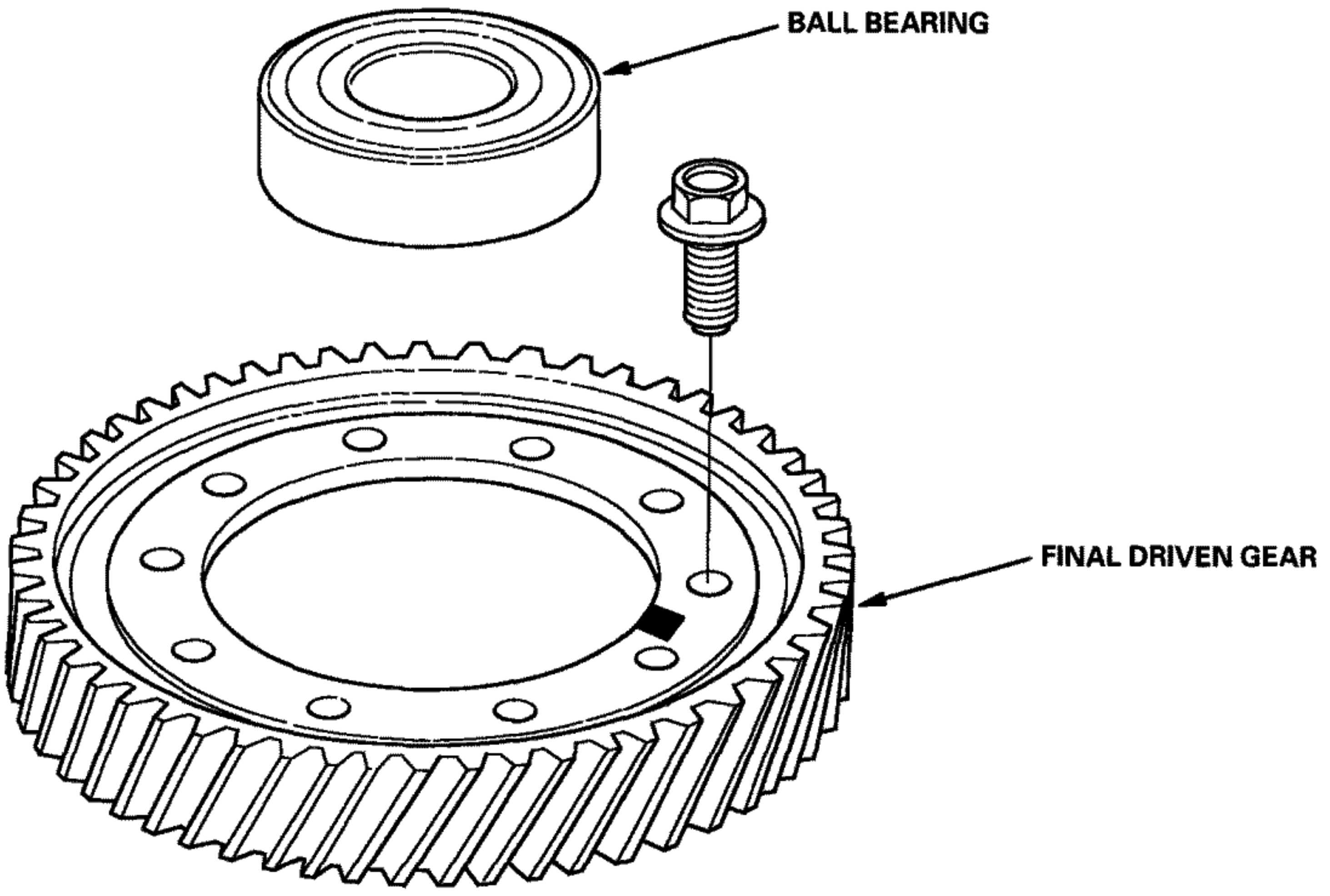
# 6 speed



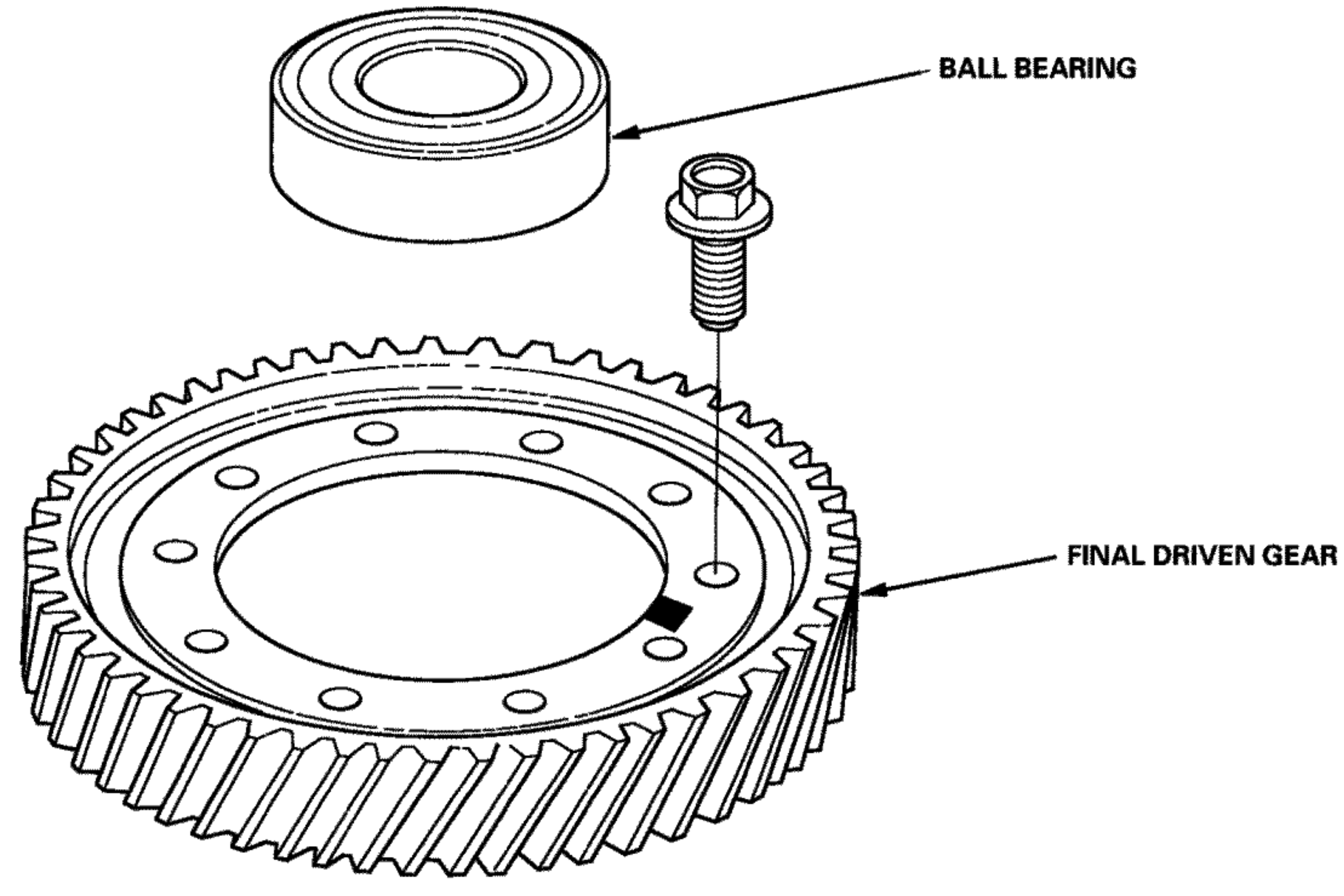








**05-06 only**



**02-04 only**

