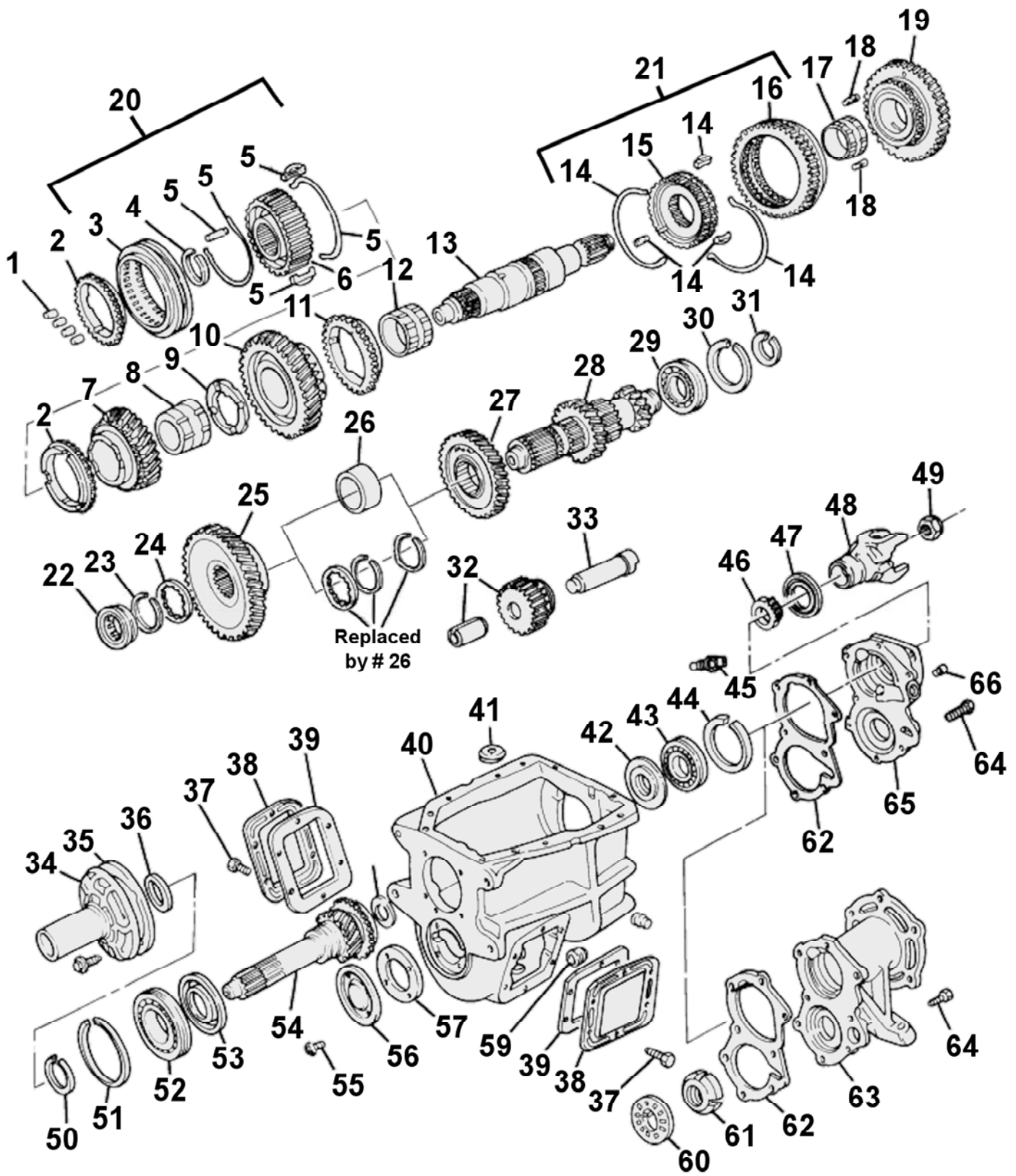


1968-91 GM CH465/SM465



1968-91 GM CH465/SM465

Item #	Description	Application	Notes	GM Part#	ZBAG Part#
1.	Input pocket bearing		Uses 17, 6.3 x 15.6 mm, QAR34604	9422666	6.3X15.6
2.	3-4 Synchronizer ring			3993036	WT304-14A
3.	3-4 Synchronizer sleeve			3901165	WT304-15
4.	3-4 Synchronizer snap ring		In small parts kit	3901166	Call
5.	3-4 Spring and key kit				WT304-K3
6.	3-4 Synchronizer hub			3901164	WT304-2.5
7.	3rd Gear		26 tooth	3901161	WT304-11
		3rd gear Kit	Includes gear and sleeve#3		WT304-11AX
8.	3rd Gear bushing		2.313"od x 1.953" id x 1.984" long	3932274	WT304-19A
9.	3rd Gear thrust washer			3932267	GM3932267
10.	2nd Gear		35 tooth	3901158	WT304-21
11.	2nd Gear Synchronizer ring			3950367	WT304-83A
12.	2nd Gear bushing		2.531"od x 2.172" id x 1.844" long	3932253	WT304-19
13.	Main Shaft	1968-91 4x2	15.625" long, 35 spline	3932265	WT304-2A
		1968-80 4x4	13.75" long, 10 spline	6259663	WT304-2C
		1981-84 K30 w/NP205			
		1981-91 K10/K20 4x4	19.694" long, 32 spline	14020859	WT304-2D
		1985-91 K30 w/NP205			
14.	1-2 Spring and key kit				WT304-K1
15.	1-2 Synchronizer hub			3946776	WT304-81
16.	1-2 Synchronizer sleeve/reverse gear		44 tooth	3901170	WT304-36
17.	1st Gear bushing	1968-78	2.531"od x 2.172" id x 1.844" long	3932253	WT304-19
		1979-91	2.531"od x 2.172" id x 1.86" long	465455	WT304-19B
18.	1st Gear key				WT304-77
19.	1st Gear		39 tooth	476766	WT304-12
20.	3-4 Synchronizer assembly				AWT304-2.5
21.	1-2 Synchronizer assembly				AWT304-80
22.	Front counter shaft bearing	1968-77	2-1/16" od	7451756	MI305-GGTV
		1978-91	1-7/8" od	7451785	KR1563TAV
23.	Front counter shaft snap ring		in small parts kit	3920703	Call
24.	Front counter shaft thrust washer		in small parts kit		Call
25.	4th Counter shaft gear		40 tooth	3955570, 14053671	AWT304-9A
26.	3-4 Counter shaft spacer		Replaces 2 snap rings and 1 washer	14020811	WT304-91
27.	3rd Counter shaft gear		36 tooth	3968038	GM3968038
28.	Counter shaft	1968-77	1.3375" diameter front bearing surface	14083537	No longer available
		1978-91	1.4015" diameter front bearing surface	14053671	WT304-3A
29.	Rear counter shaft bearing			907474	6308N
30.	Rear counter shaft outer snap ring		in small parts kit		Call
31.	Rear counter shaft snap ring		in small parts kit	3866346	Call
32.	Reverse idler gear		23 tooth	3901141	WT304-10
33.	Reverse idler shaft		5.938"x1.0"	3901144	WT304-35
34.	Input retainer	1968-91	w/1-1/8" diameter clutch splines	3901178	WT304-6
		1968-91 C60	w/1-1/2" diameter clutch splines	3905403	WT304-6A
35.	Input retainer gasket		in gasket/seal kit	3866651	Call
36.	Input seal			3987937	CR16054
37.	PTO cover bolt		3/8"x16x1"	3905486	Call
38.	PTO cover			6273213, 12547312	1304-301-035
39.	PTO cover gasket		in gasket/seal kit	6273214, 8672163	Call
40.	Main case, 12" long, 2 PTO openings	1968-72	Bottom two bell housing bolt holes are threaded, all other years are not	3901126	Call
		1973-77	2-1/16" id front counter shaft bearing bore	3901126	Call
		1978-91	1-7/8" id front counter shaft bearing bore	465453, 465451	Call
41.	Magnet			3787240, 12471607	Call
42.	1st gear thrust washer			465450	GM465450
43.	Rear mainshaft bearing			907474, 8672404	6308N
44.	Rear mainshaft bearing outer snap ring		in small parts kit		Call
45.	Speed sensor/speedometer drive gear	1989-91		19108029	Call
46.	Reluctor wheel/speedo drive gear	1989-91	4x2, reluctor wheel	23046538	GM23046538
47.	Rear seal	1968-91 4x2		3911817	CR19982
48.	Rear yoke			3915056	Call
49.	Rear mainshaft nut	1968-91 4x2		3830575	WT304-90
50.	Input snap ring		in small parts kit	3901152	Call
51.	Input bearing outer snap ring		in small parts kit		Call
52.	Input bearing	1968-87 & 1988-91 Blazer/Jimmy & V3500	w/cast iron top cover, 0.68" thick	907993, 8672061	N1211L
		1988-91 C/K series	w/aluminum top cover, 0.83" thick	8672405	6211LL
53.	Input bearing oil slinger			3901177	GM3901177

*** Call for availability on items that do not have a ZBAG part number listed ***

1968-91 GM CH465/SM465

Item #	Description	Application	Notes	GM Part#	ZBAG Part#	
54.	Input shaft	1968-87 & 1988-91 Blazer/Jimmy & V3500	w/cast iron top cover 1 1/8" diameter clutch splines	3901175	WT304-16A	
		1968-91 C60	w/V8, 1-1/2" diameter clutch splines	3901176, 15588219	WT304-16	
		1988-91 C/K series	w/aluminum top cover, must use a WT304-16A and change input bearing to a N1211L	8672408	WT304-16C	
55.	Front counter shaft cover bolt		5/16"x18x1/2"		Call	
56.	Front counter shaft cover			3866347	Call	
57.	Front counter shaft cover gasket		in gasket/seal kit		Call	
58.	Input pocket bearing snap ring		in small parts kit		Call	
59.	Drain/fill plug		1/2" pipe plug		Call	
60.	Rear mainshaft lock washer			335366	GM335366	
61.	Rear mainshaft lock nut	1968-91 4x4		127711, 12388448	GM12388448	
62.	Rear case gasket		in gasket/seal kit		Call	
63.	4x4 Tail housing	1968-69	w/Rockwell 221		Call	
		1970-84	w/NP205, cast# 6271549	15596724	GM15596724	
		1973-75	w/NP203, cast# 336984		Call	
		1981-84	w/NP208, tall	15598986	GM15598986	
		1985-91 K3500/V3500	w/NP208/241, short, cast# 15597793	15597793	GM15597793	
		1985-87 K1500/V1500 1985-91 K2500/V2500 1985-91 K3500/V3500	w/NP205 cast# 15557792	15597792	Call	
64.	Tail housing bolt			2059927	Call	
65.	4x2 Tail housing				Call	
66.	Dowel pin		3/8"x7/8"	141242	Call	
Not Listed	Shifter stick	1973-91	w/cast iron top cover, 28-7/8" long bend to fit		WT304-28	
		1988-91	w/aluminum top cover, bend to fit		WT304-28A	
	Gasket set (no seals)				GS304-55	
	Gasket and seal kit				K200105	
	Profab 3rd gear, 3.26 ratio kit	Non-synchronized off-road use only, straight cut gear set				PROFAB3RDGEAR
	Small parts kit				SP304-50	
	Bearing kits	1968-91	w/cast iron top cover Check input bearing number on 1988-91, 0.68" thick bearing		BK129	
		1968-91	w/cast iron top cover, includes synchronizer rings Check input bearing number on 1988-91, 0.68" thick bearing		BK129WS	
		1988-91	w/aluminum top cover Check input bearing number, 0.83" thick bearing		BK129L	
		1988-91	w/aluminum top cover, includes synchronizer rings Check input bearing number, 0.83" thick bearing		BK129LWS	

*** Call for availability on items that do not have a ZBAG part number listed ***

1968-91 GM CH465/SM465

Item #	Description	Application	Notes	GM Part#	ZBAG Part#
1.	Shift cover	1968-87 All 1988-91 Blazer/Jimmy/Suburban 1988-91 R/V3500	w/cast iron top cover	3952668	Call
2.	Gasket	1968-87 All 1988-91 Blazer/Jimmy/Suburban 1988-91 R/V3500	w/cast iron top cover	8672187	Call
3.	Dowel pin			141242	Call
4.	Shift rail plug	1968-87 All 1988-91 Blazer/Jimmy/Suburban 1988-91 R/V3500	w/cast iron top cover	143195	Call
5.	Shift tower roll pin	1968-87 All 1988-91 Blazer/Jimmy/Suburban 1988-91 R/V3500	w/cast iron top cover	456587	Call
6.	Shift cover bolt	1968-87 All 1988-91 Blazer/Jimmy/Suburban 1988-91 R/V3500	w/cast iron top cover	2059927	Call
7.	Transmission vent	1968-87 All 1988-91 Blazer/Jimmy/Suburban 1988-91 R/V3500	w/cast iron top cover	15771000 25892279	Call
8.	Shift shaft detent spring			551946	Call
9.	Interlock/detent ball			7826284	Call
10.	Interlock pin			3901139	GM3901139
11.	1-2 Shift rail	1968-87 All 1988-91 Blazer/Jimmy/Suburban 1988-91 R/V3500	w/cast iron top cover	3901133 15592255	Call
12.	3-4 Shift rail	1968-87 All 1988-91 Blazer/Jimmy/Suburban 1988-91 R/V3500	w/cast iron top cover	3952669 15592256	Call
13.	Reverse shift rail	1968-87 All 1988-91 Blazer/Jimmy/Suburban 1988-91 R/V3500	w/cast iron top cover	3901132 15592254	Call
14.	1-2 Shift fork	1968-87 All 1988-91 Blazer/Jimmy/Suburban 1988-91 R/V3500	w/cast iron top cover	3901137	WT304-22
15.	3-4 Shift fork	1968-87 All 1988-91 Blazer/Jimmy/Suburban 1988-91 R/V3500	w/cast iron top cover	3901138	WT304-23A
16.	Reverse shift fork	1968-early 1970	Replaced by WT304-22B Must also replace# 18	3901136	Call
		1968-87 All 1988-91 Blazer/Jimmy/Suburban 1988-91 R/V3500	w/cast iron top cover	3978730	WT304-22B
17.	Reverse shift fork plunger			3864968	Call
18.	Reverse plunger spring	1968-early 1970	Replaced by GM3978731 Must also replace# 16	3864966	Call
		Late 1970-91	2-11/32" free length	3978731	GM3978731
19.	Reverse plunger retainer clip			3727182	GM3727182
20.	Roll pin		3/16"x1-1/8"	456368 12338111	Call
21.	Aluminum shift cover	1988-91 C/K1500/2500/3500	w/aluminum top cover	8672011	Call
22.	Gasket	1988-91 C/K1500/2500/3500	w/aluminum top cover	8672187	Call
23.	Shift tower roll pin	1988-91 C/K1500/2500/3500	w/aluminum top cover	9416325	Call
24.	Transmission vent	1988-91 C/K1500/2500/3500	w/aluminum top cover	8652580	Call
25.	Shift rail plug	1988-91 C/K1500/2500/3500	w/aluminum top cover	172545	Call
26.	Shift shaft detent pin	1988-91 C/K1500/2500/3500	w/aluminum top cover	15590194	Call
27.	1-2 Shift rail	1988-91 C/K1500/2500/3500	w/aluminum top cover	8672012	Call
28.	3-4 Shift rail	1988-91 C/K1500/2500/3500	w/aluminum top cover	8672013	Call
29.	Reverse shift rail	1988-91 C/K1500/2500/3500	w/aluminum top cover	8672014	Call
30.	Roll pin	1988-91 C/K1500/2500/3500	w/aluminum top cover	15590193	Call
31.	1-2 Shift fork	1988-91 C/K1500/2500/3500	w/aluminum top cover	8672001	GM23046434
32.	3-4 Shift selector block	1988-91 C/K1500/2500/3500	w/aluminum top cover	8672019	Call
33.	3-4 Shift stop spacer	1988-91 C/K1500/2500/3500	w/aluminum top cover	8672531	Call
34.	3-4 Shift fork	1988-91 C/K1500/2500/3500	w/aluminum top cover	15590189	GM15590189
35.	Reverse shift fork	1988-91 C/K1500/2500/3500	w/aluminum top cover	8672665	GM8672665
Not listed	Shifter stick	1968-87 All 1988-91 Blazer/Jimmy/Suburban 1988-91 R/V3500	w/cast iron top cover, 28-7/8" long bend to fit		WT304-28
		1988-91 C/K1500/2500/3500	w/aluminum top cover, bend to fit		WT304-28A
	Gasket set (no seals)				GS304-55
	Gasket and seal kit				K200105

*** Call for availability on items that do not have a ZBAG part number listed ***