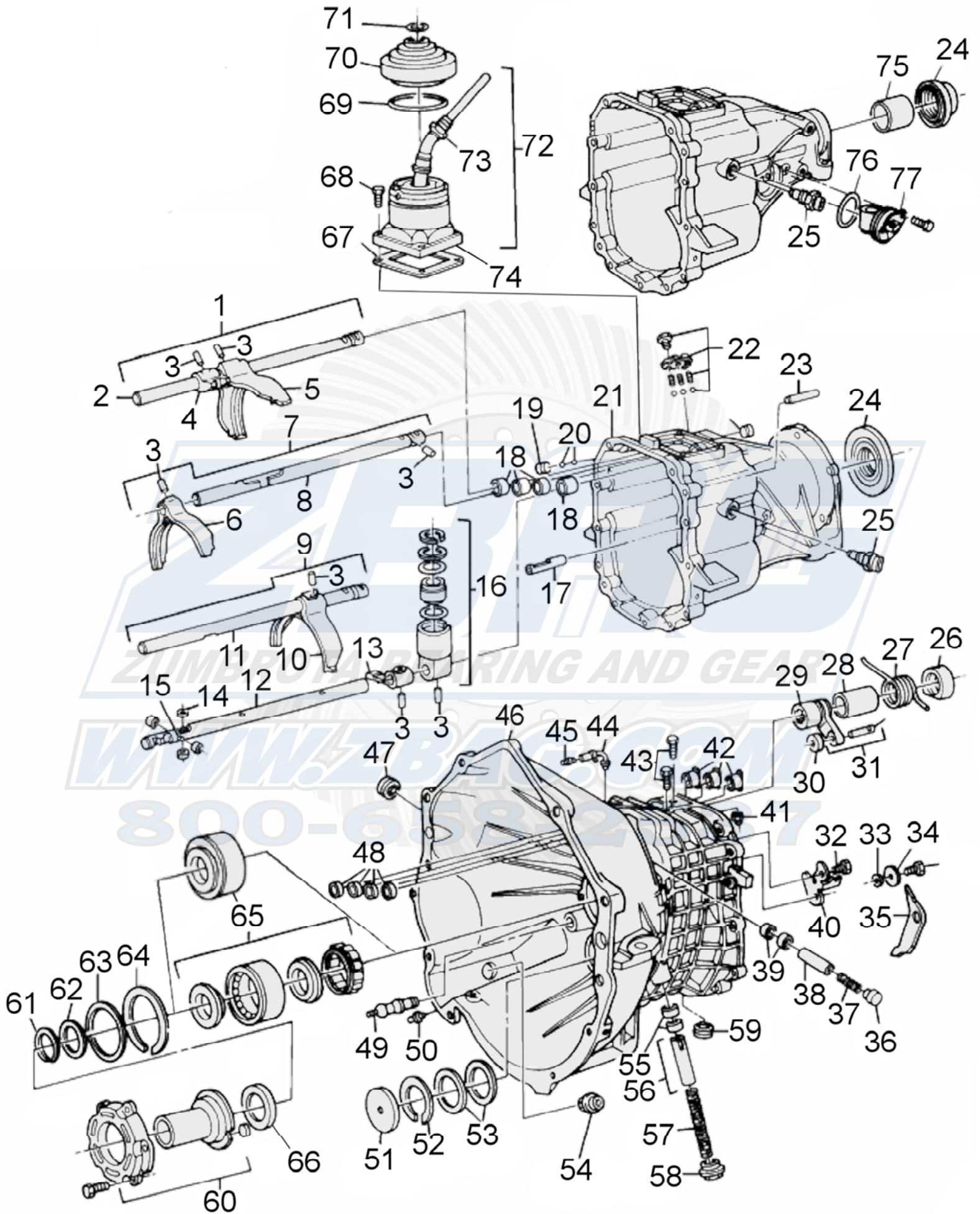
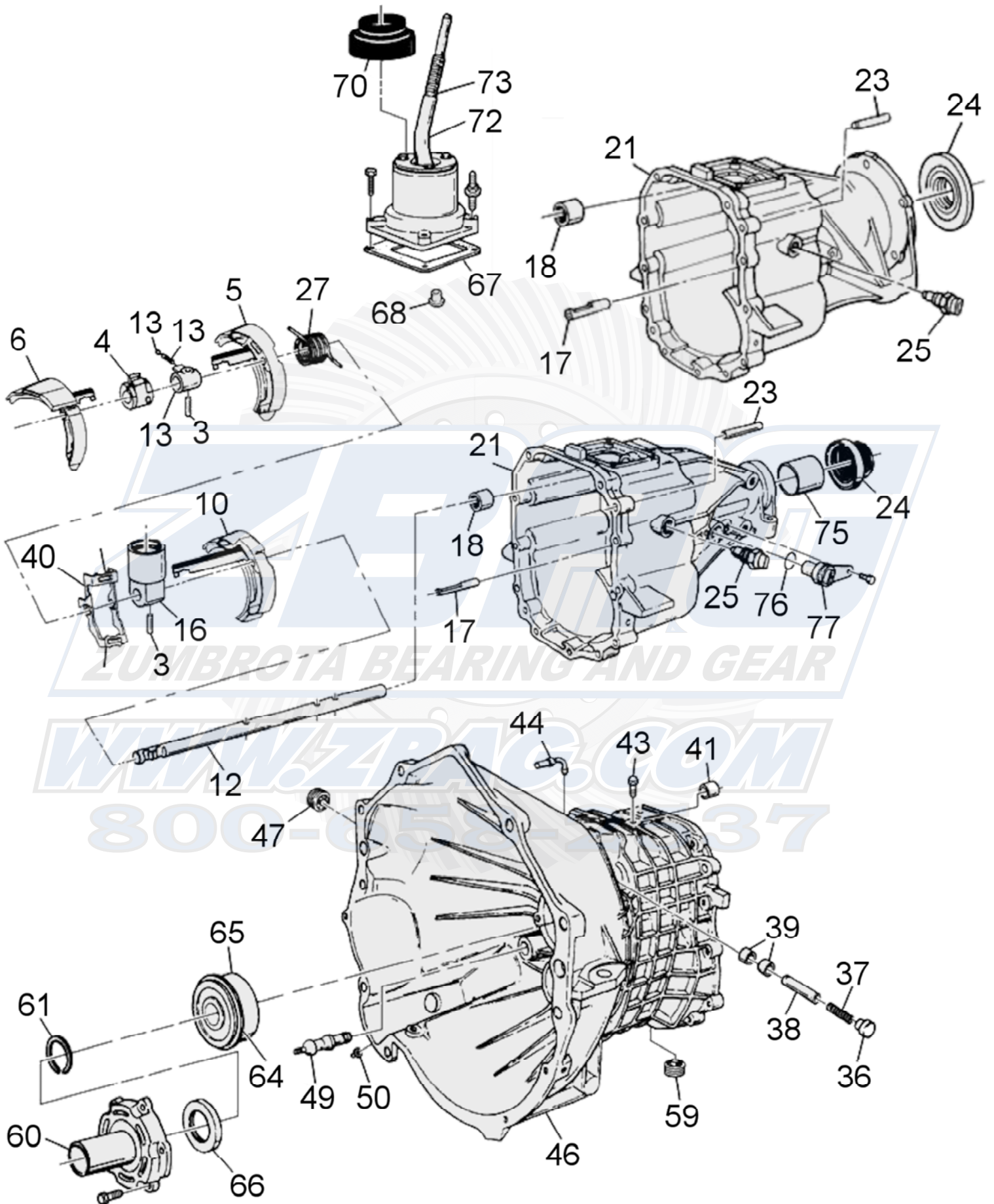


1988-92 GM HM290/5LM60



1993-98 GM NV3500

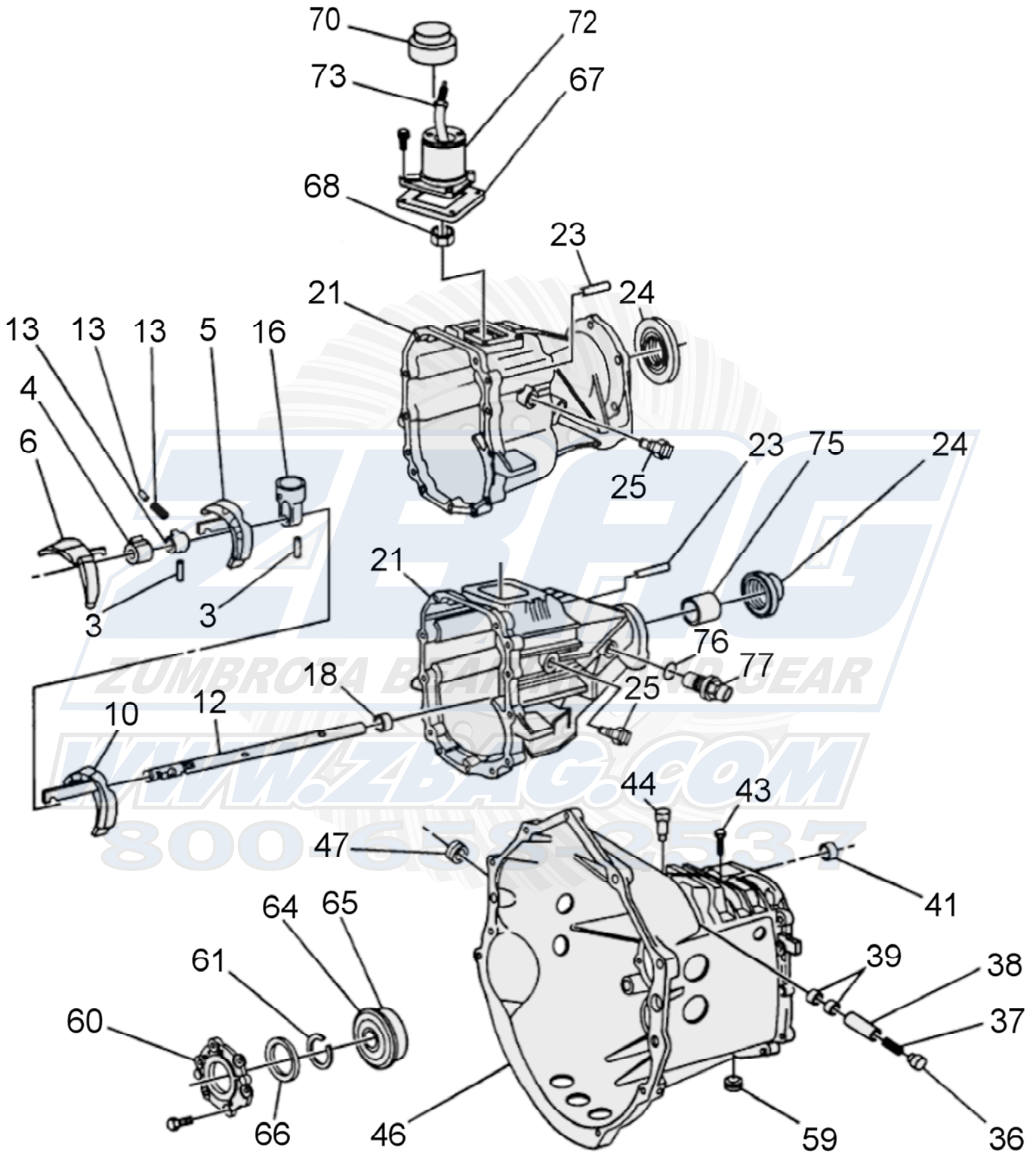


LUMBROTA BEARING AND GEAR

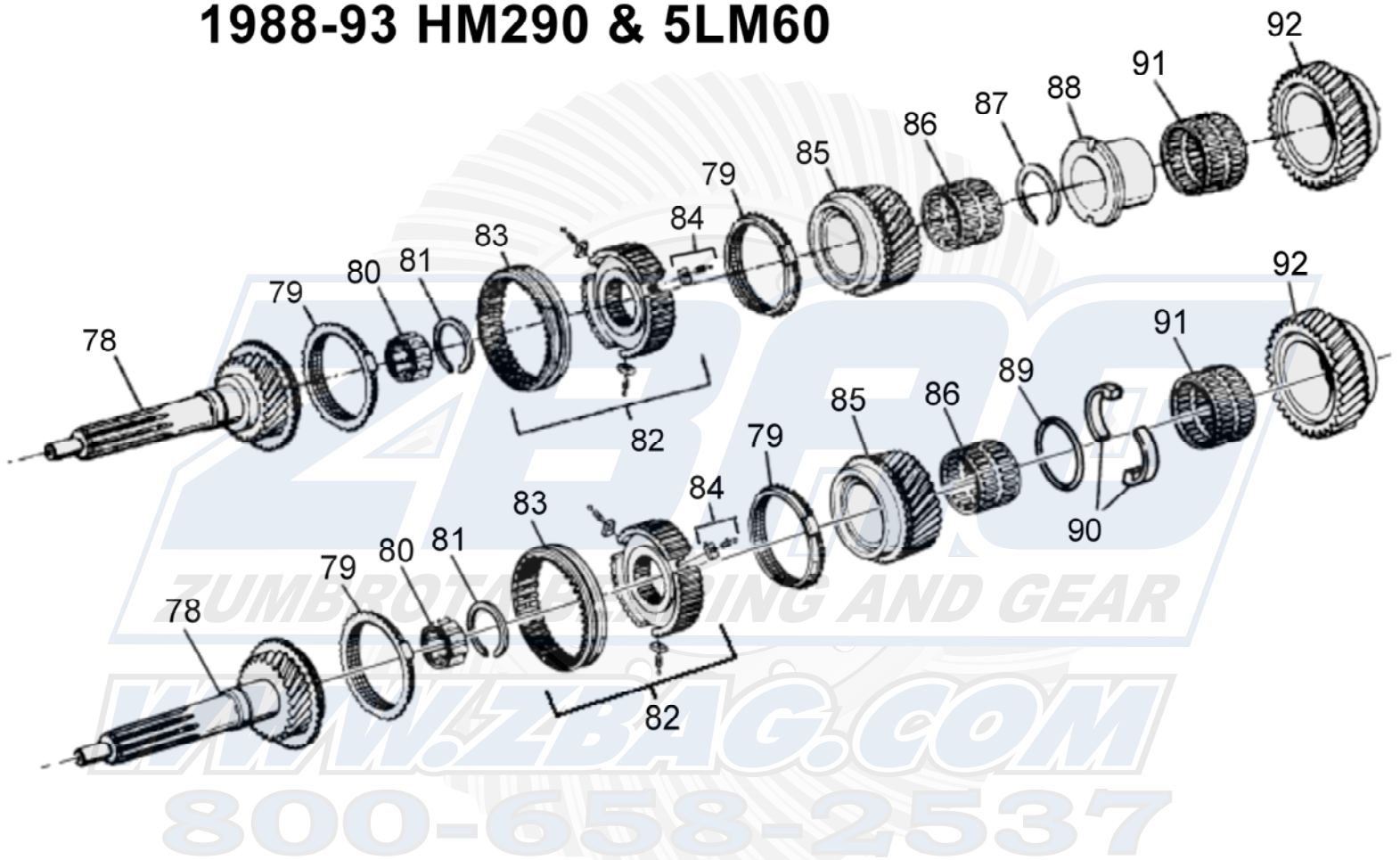
WWW.LZP.COM

800-852-37

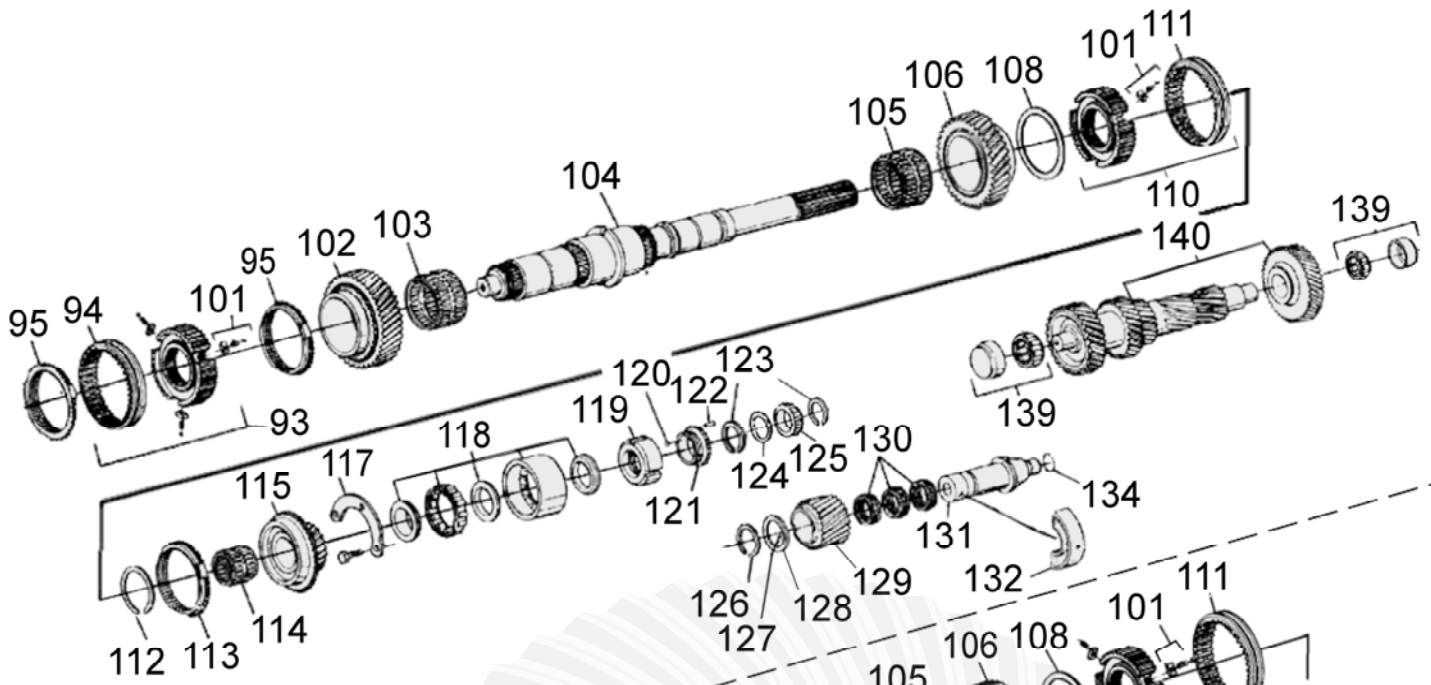
1999-2007 GM NV3500



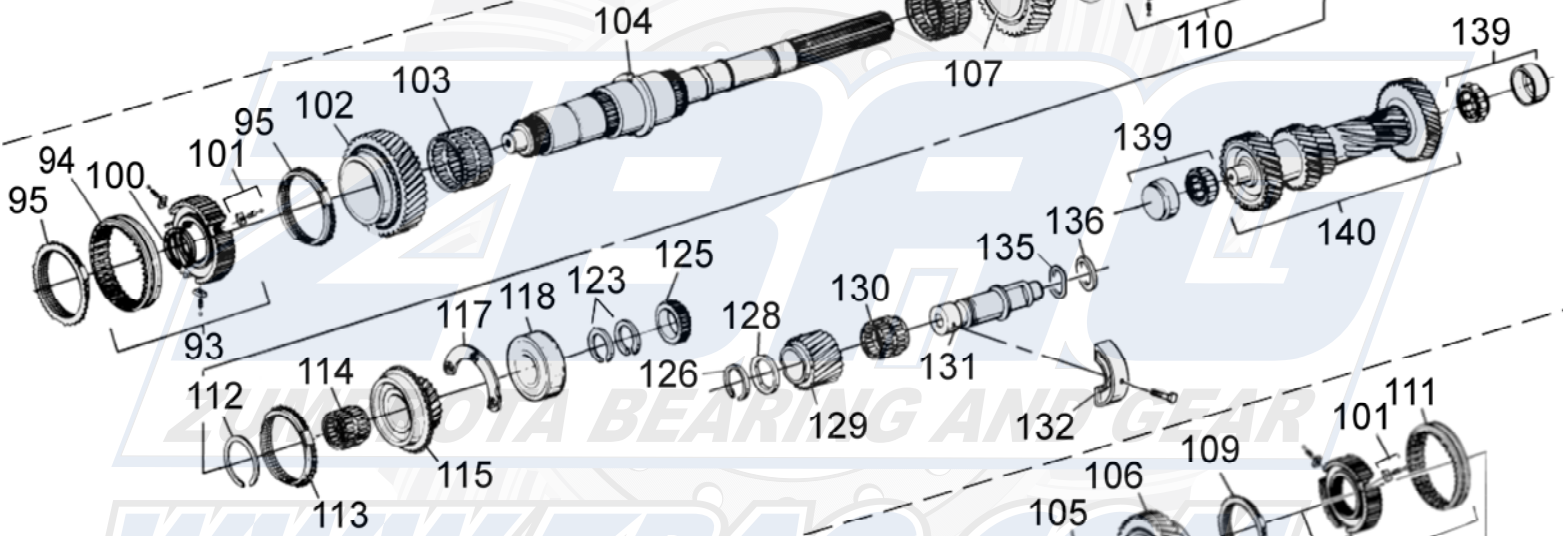
1988-93 HM290 & 5LM60



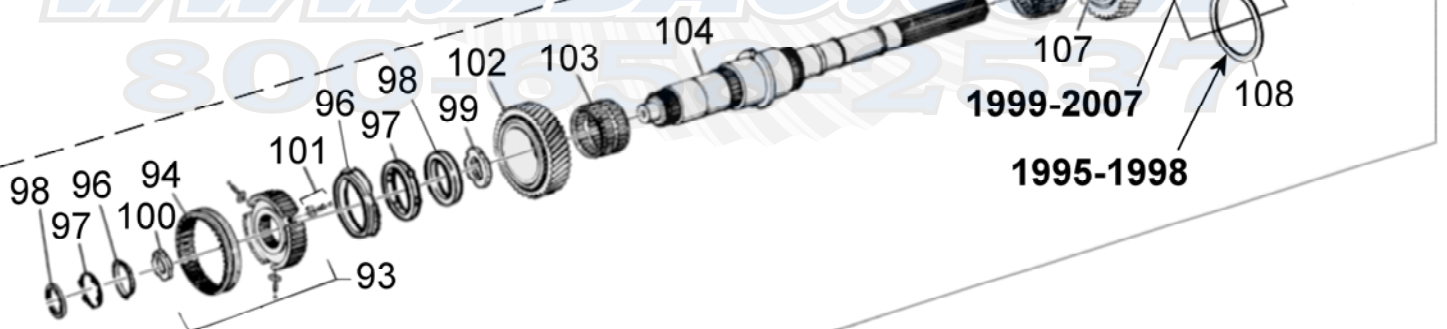
1994-2007 NV3500



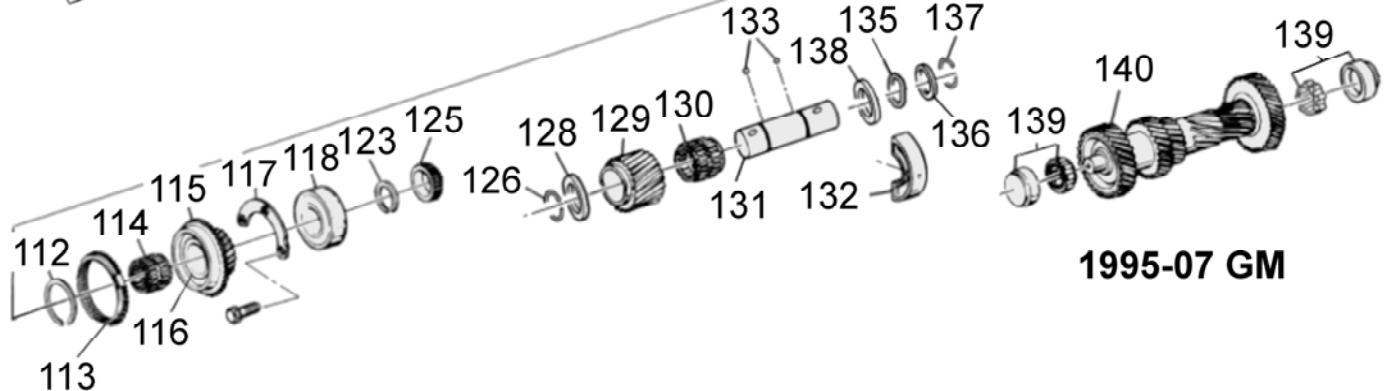
1988-89 GM



1990-94 GM



1995-1998



1995-07 GM

GM Getrag - 1988 HM290 - 1989-90 5LM60 - 1991-92 NVG 5LM60 - 1993-2007 NV3500

Item #	Description	Application	Notes	GM Part#	ZBAG Part#
1.	1-2 Shift fork assembly			8672119	Call
2.	1-2 Shift fork rail			8672119	Call
3.	Roll pin		32mm long	8672316	GM8672316
			22mm long	12477934	GM12477934
4.	1-2 Shifter lug			8672912	Call
5.	1-2 Shift fork	1988-92 All	Three rail trans		Call
		1993-1995 C/K All	Single rail trans	88958968	25420
		1996-98 C/K w/MG5 wide ratio	w/1.18" id counter shaft bearings		
		1999-2007 Silverado			
		1996-98 C/K w/M50 close ratio	w/1.3" id counter shaft bearings	88958969	25416
6.	3-4 Shift fork	1988-92 All	Three rail trans		GM8672260
		1993-07 All	Single rail trans	88958970	25418
7.	3-4 Shift fork assembly			8672260	Call
8.	3-4 Shift fork rail				Call
9.	5-R Shift fork assembly	1988-92	First design	8672121	Call
		1988-92	Second design	8672262	Call
10.	5-R Shift fork	1988-92 All	Three rail trans		Call
		1993-98 C/K	Single rail trans	12548126	GM12548126
		1999-2007 Silverado		88958971	
		1993-2004 S10	Single rail trans	88958972	20047
				12382844	
				12382889	
11.	5-R Shift fork rail				Call
12.	Main shift rail			12549370	Call
13.	Main shift rail selector		Must also replace the following: Selector spring GM14082096; Selector plunger GM12545959		GM12475399
14.	Main shift rail detent roller			23049899	GM23049899
15.	Main shift rail detent roller pin				Call
16.	Shifter socket				Call
17.	Oil tube				Call
18.	Shift rail rear bushings				Call
19.	Detent plug				Call
20.	Detent ball				Call
21.	Tail housing				Call
22.	Detent ball assembly				Call
23.	Dowel pin				Call
24.	Rear seal	C/K/Silverado 4x2			CR10289
		S10 4x2			CR9846
		All 4x4			CR14087
25.	Reverse light switch				Call
26.	Bias spring seat			23049866	Call
27.	Bias spring			8672248	Call
28.	Bias spring sleeve			23049871	Call
29.	Bias lever				Call
30.	Bias roller				Call
31.	Bias pin assembly			8672244	Call
32.	Bias spring bracket bolt				Call
33.	5-R Detent cam bushing				Call
34.	5-R Detent cam washer				Call
35.	5-R Detent cam				Call
36.	Shift rail detent plug			23049887	Call
37.	Shift rail detent spring			8672307	Call
38.	Shift rail detent plunger			23049481	Call
39.	Shift rail detent bushing			23049803	Call
40.	Bias spring bracket				Call
41.	Main shift rail front bushing				Call
42.	Shift rail front bushings				Call
43.	Shift rail bolt	1993-07 All		12540348	GM12540348
44.	Vent tube				17988
45.	Vent tube dust cap				Call
46.	Front case half				Call
47.	Oil fill plug		M24x1.5		Call
48.	Shift rail plug			14080573	Call
49.	Clutch fork pivot stud			23049797	290-102
50.	Pivot stud grease zerker				Call
51.	Front counter shaft bearing plug	1988-90 All	W/308-338.KSE bearing		GM8672243A
		1991-92 All	All w/FC67063 bearing		GM8672243
52.	Front counter shaft snap ring				Call
53.	Front counter shaft bearing shim				Call
54.	Clutch fork access hole plug				Call
55.	5-R detent plunger bushing				Call

GM Getrag - 1988 HM290 - 1989-90 5LM60 - 1991-92 NVG 5LM60 - 1993-2007 NV3500

Item #	Description	Application	Notes	GM Part#	ZBAG Part#
56.	5-R detent plunger				Call
57.	5-R detent plunger spring				Call
58.	5-R detent plunger plug				Call
59.	Oil drain plug		M24x1.5		Call
60.	Input retainer	1988-90 All 1991-95 All 1996-07 All		8672947 12549362	290-6N 290-6A Call
61.	Input bearing snap ring		Bearing to shaft		Call
62.	Input bearing spacer				Call
63.	Input bearing shim				Call
64.	Input bearing snap ring		Bearing to case		Call
65.	Input bearing	1988-91 All 1992-07 All		23049494	GM23049494 573305D CR10290
66.	Input Seal				Call
67.	Shifter assembly gasket			12549042	Call
68.	Shifter stub lower pivot bushing				GM11509417
69.	Shift boot lower O-ring	1988-92 All			Call
70.	Shifter boot	1988-92 All			Call
71.	Shifter boot upper O-ring	1988-92 All			Call
72.	Shift tower	1988-92 C/K 1993-1998 C/K 1999-2007 Silverado 1996-98 C/K 1999-2007 Silverado 1990-92 S10 1993-94 S10 1995-2000 S10 1995-2004 S10	w/Tall aluminum shift pocket Use with 12549042 gasket Some may have this updated tower that does not use the 12549042 steel/rubber spacer Aluminum tower Plastic tower Use with 12549042 gasket Some 1995-2000 may have this updated tower that does not use the 12549042 steel/rubber spacer	12380394 12375021 12382863 8672249 GM12375022 GM12382853 12382854	GM8678461 27874 Call GM8672249 GM12375022 GM12382853 Call
73.	Shift lever lock nut				Call
74.	Shift tower seal	1988-92 All 1988-92 All	2.16" od 2.69" od		290-45 290-45A
75.	Tail bushing	1988-07 C/K/Silverado 1990-2004 S10			290-62 WT266-62
76.	Speed sensor O-ring				Call
77.	Speed sensor	1988-98 4x2 1999-2007 4x2	Bolt on Screw in		Call Call
78.	Input Shaft	1988-90 All 1991-95 All 1996-07 All	26 tooth w/step, 1.3" wide bearing 26 tooth no step, 0.9" wide bearing, 5LM60-16 26 tooth, 3 ID lines on clutch splines	23049683 12540345 88959246 12547396 88934832	290-16R 290-16AR 290-16CR
79.	3-4 Synchronizer Ring			8672050	290-14
80.	Input pocket bearing			23049686	308-338.KSE
81.	Snap Ring				GM08672928
82.	3-4 Synchronizer assembly			8672223	18130
83.	Synchronizer Sleeve				290-15
84.	Spring and key kit				WT290-K
85.	3rd Gear	1988-91 All 1992-2007 All	30 tooth, w/snap ring on mainshaft between 2nd & 3rd 30 tooth, w/split ring on main shaft between 2nd & 3rd NV22352	23049694 88934831 12549364 23049697	290-11 290-11A 290-148
86.	3rd Gear needle bearing				Call
87.	3-4 synchronizer retaining snap ring		Selectable thickness		Call
88.	Mainshaft bearing sleeve	1988-91 C/K 1990-92 S10	w/press on sleeve under 2nd gear	23049497	Call
89.	2nd gear thrust washer retaining ring			12547384	Call
90.	Mainshaft split ring	1993-95 C/K All 1996-98 C/K w/MG5 wide ratio 1999-2007 Silverado 1996-98 C/K w/M50 close ratio	0.312" thick split ring 0.245" thick split ring	12549349 12549363	Call Call
91.	2nd Gear needle bearing		w/press on sleeve under 2nd gear w/o press on sleeve under 2nd gear	23049706 12548468	Call Call
92.	2nd Gear	1988-90 All 1991-94 All 1995-04 S10	39 tooth non-w/c, 2.75" inside diameter, w/press on sleeve under gear, 290-21H 39 tooth non-w/c, 2.28" inside diameter, w/o press on sleeve under 2nd gear	23049698 08672629	Call 290-21
		1995-04 S10	38 tooth w/c, w/0.312" thick split ring, NV21235	88934826 12549344	Call
		1995 C/K All 1996-98 C/K w/MG5 wide ratio 1999-2007 Silverado	39 tooth w/c, w/0.312" thick split ring, NV21239	88934835 125493400	290-21A
		1996-98 C/K w/M50 close ratio	38 tooth w/c, w/0.245" thick split ring, NV21361	12549352	Call

GM Getrag - 1988 HM290 - 1989-90 5LM60 - 1991-92 NVG 5LM60 - 1993-2007 NV3500

Item #	Description	Application	Notes	GM Part#	ZBAG Part#
93.	1-2 Synchronizer assembly	1988-94 All	non-world class	8672313 12540389	18131
		1995-07 All	World class, 34403	88934824	Call
94.	1-2 Synchronizer sleeve	1988-94 All	non-world class		WT290-15
		1995-07 All	World class		WT290-15A
95.	1-2 Synchronizer ring	1988-94 All	non-world class		WT290-14
96.	1-2 Outer Synchronizer ring	1995-07 All	World class		18831
97.	1-2 Center Synchronizer ring	1995-07 All	World class		21241
98.	1-2 Inner Synchronizer ring	1995-07 All	World class, 18835	12548368	Call
99.	1st Gear inner Synchronizer ring hub	1995-07 All	World class, 18834	12548367	Call
100.	1-2 Synchronizer snap ring		variable thickness		Call
101.	Spring and key kit				WT290-K
102.	1st gear	1988-90 C/K 1990-91 S10	43 tooth, non-world class	23049701	18471
		1991-94 C/K 1992-94 S10	43 tooth non-world class	12543819	18471
		1995-2004 S10	40 tooth, World class 21233, 33326	88934827 12549342	Call
		1995, 1999-2007 C/K/Silverado 1996-98 C/K w/MG5 wide ratio	43 tooth, World class, 33325	88934834 12549337	290-12C
		1996-98 C/K w/M50 close ratio	40 tooth, World class, 21359	12549350	290-12D
103.	1st gear needle bearing		18795	12548230	Call
104.	Mainshaft	1988-90 C/K 4x2	non-world class, uses snap ring between 2nd and 3rd, 20-5/16" long, wide output bearing	8672971 23049715	Call
		1991-93 C/K 4x2	non-world class, uses snap ring between 2nd and 3rd, 20-5/16" long, narrow output bearing groove on one thrust surface for 1st-Reverse gears	8672615	Call
		1993 C/K 4x2	non-world class, uses snap ring between 2nd and 3rd, 20-5/16" long, narrow output bearing groove on both thrust surfaces for 1st-Reverse gears	12546670	Call
		1994 C/K 4x2	non-world class, 0.312" groove between 2nd & 3rd no seal in 5th gear, 20-5/16" long, narrow output bearing	12545773	Call
		1995 C/K 4x2 w/MG5	world class, 0.312" groove between 2nd & 3rd, 5th gear has seal, 20-5/16" long, narrow output bearing, 18800	12548227	290-2B
		1996-98 C/K w/MG5 wide ratio 1999-07 Silverado 4x2	world class, 0.312" groove between 2nd & 3rd, 5th gear has seal, 20-5/16" long, narrow output bearing, 20855	12547352 12476305	290-2B
		1996-98 C/K w/M50 close ratio 4x2	world class, 0.245" groove between 2nd & 3rd, 5th gear has seal, 20-5/16" long, narrow output bearing, 20856	12547353	Call
		1990 S10 4x2	non-world class, uses snap ring between 2nd and 3rd, 23-3/8" long, wide output bearing	8672228	Call
		1991-92 S10 4x2	non-world class, uses snap ring between 2nd and 3rd, 23-3/8" long, narrow output bearing groove on one thrust surface for 1st-Reverse gears	8672613	Call
		1993 S10 4x2	non-world class, uses snap ring between 2nd and 3rd, 23-3/8" long, narrow output bearing groove on both thrust surfaces for 1st-Reverse gears	12545145	Call
		1994 S10 4x2	non-world class, 0.312" groove between 2nd & 3rd no seal in 5th gear, 23-3/8" long, narrow output bearing	12545801	Call
		1995 S10 4x2	world class, 0.312" groove between 2nd & 3rd, 5th gear has seal, 23-3/8" long, narrow output bearing, 18802	12548224	Call
		1996-2004 S10 4x2	world class, 0.312" groove between 2nd & 3rd, 5th gear has seal, 23-3/8" long, narrow output bearing, 28352	12476302 12547356	Call
		1988-90 C/K 4x4	non-world class, uses snap ring between 2nd and 3rd, 19-5/16" long, wide output bearing	8672972	290-2
		1991-93 C/K 4x4	non-world class, uses snap ring between 2nd and 3rd, 19-5/16" long, narrow output bearing groove on one thrust surface for 1st-Reverse gears	8672612	290-2A
		1993 C/K 4x4	non-world class, uses snap ring between 2nd and 3rd, 19-5/16" long, narrow output bearing groove on both thrust surfaces for 1st-Reverse gears	12546738	290-2A
		1994 C/K 4x4	non-world class, 0.312" groove between 2nd & 3rd no seal in 5th gear, 19-5/16" long, narrow output bearing	12545810	290-2A
		1995 C/K 4x4	world class, 0.312" groove between 2nd & 3rd, 5th gear has seal, 19-5/16" long, narrow output bearing, 18801	12548229	290-2C

GM Getrag - 1988 HM290 - 1989-90 5LM60 - 1991-92 NVG 5LM60 - 1993-2007 NV3500

Item #	Description	Application	Notes	GM Part#	ZBAG Part#
		1996-98 C/K 4x4 w/MG5 wide ratio 1999-07 Silverado 4x4	world class, 0.312" groove between 2nd & 3rd, 5th gear has seal, 19-5/16" long, narrow output bearing, 20857	12547354 12476306	290-2C
		1996-98 C/K 4x4 w/M50 close ratio	world class, 0.245" groove between 2nd & 3rd, 5th gear has seal, 19-5/16" long, narrow output bearing, 20858	12547355	Call
		1990 S10 4x4	non-world class, uses snap ring between 2nd and 3rd, 18-1/4" long, wide output bearing	8672226	Call
		1991-92 S10 4x4	non-world class, uses snap ring between 2nd and 3rd, 18-1/4" long, narrow output bearing groove on one thrust surface for 1st-Reverse gears	8672614	Call
		1993 S10 4x4	non-world class, uses snap ring between 2nd and 3rd, 18-1/4" long, narrow output bearing groove on both thrust surfaces for 1st-Reverse gears	12545153	Call
		1994 S10 4x4	non-world class, 0.312" groove between 2nd & 3rd no seal in 5th gear, 18-1/4" long, narrow output bearing	12545815	Call
		1995 S10 4x4	world class, 0.312" groove between 2nd & 3rd, 5th gear has seal, 18-1/4" long, narrow output bearing, 18803	12548471	Call
		1996-2004 S10 4x4	world class, 0.312" groove between 2nd & 3rd, 5th gear has seal, 18-1/4" long, narrow output bearing, 28353	12476303 12547357	Call
105.	Reverse gear needle bearing	1988-91 All		8680487 23049706	Call
		1992-2007 All		8680486 23049697	Call
106.	Reverse gear	1988-89 C/K 1990 S10	40 tooth, w/o seal in reverse gear	23049704	290-36A
		1990-93 C/K 1991-92 S10	38 tooth , w/o seal in reverse gear 18472	8672620 12543818	290-36
		1994-98 C/K	38 tooth, w/seal in reverse gear 33332	12545778 88958810	290-36
		1999-2007 Silverado	38 tooth, synchronized reverse 18604, 33331	12473978 88934825	290-36
107.	Reverse gear seal	1994-2007 All	18773	12547174 12382827	Call
108.	Reverse stop ring	1988-98 All	spiral snap ring		Call
109.	Reverse synchronizer ring	1999-2007 Silverado		23049723	18291
110.	5/R Synchronizer assembly	1988-93 C/K	no seal in reverse gear, w/snap ring groove	12540387	18132
		1994-98 C/K	w/seal in reverse gear, w/snap ring groove	12545777 88958801	18723
		1999-2007 Silverado	w/seal in reverse gear, w/o snap ring groove, synchronized reverse	88934828	Call
111.	5/R Synchronizer sleeve				290-15
112.	5/R Synchronizer snap ring	1988-90 C/K		8672920	Call
		1991-2007 C/K/Silverado	variable thickness		Call
113.	5th Synchronizer ring				WT290-15
114.	5th gear needle bearing	1988-93 C/K		23049693	Call
		1994-2007 C/K/Silverado		12545775	Call
115.	5th gear	1988-90 C/K	24 tooth, no id, no seal style,	23049690	290-18
		1991-93 C/K	24 tooth, no id, no seal style	8672616	290-18
		1990-91 S10	26 tooth	8672208	Call
		1991-93 S10	26 tooth	8672617	Call
		1994 S10	26 tooth	12545802	Call
		1995-2005 S10	22 tooth	88934830	Call
		1994-95 C/K 1996-98 C/K w/MG5 wide ratio 1999-07 Silverado 4x4	24 tooth, seal style, 1.730" O.L. 18584, 30277	88934833 12545776 12547365	290-18A
		1996-98 C/K w/M50 close ratio	24 tooth, seal style, 1.845" O.L.	88958958	Call
116.	5th gear seal			12547144	Call
117.	Rear mainshaft bearing retainer	1988-89 C/K		23049633	Call
		1990-2007 C/K/Silverado 4x2	Threaded holes	8672265	Call
		1990-2007 C/K/Silverado 4x4	Drilled holes	8672266	Call
118.	Rear mainshaft bearing	1988-89 C/K		23049495	GM23049494
		1989-07 All		88996720	573305D
119.	Rear-M.S. bearing outer thrust ring	1989-90 C/K		23049752	Call
120.	Rear mainshaft bearing/reverse idler thrust washer alignment ball	1989-90 C/K		8672914	Call
121.	Rear main bearing inner thrust ring	1988-90 C/K		23049751	Call
122.	Rear bearing thrust ring locking pin	1989-90 C/K			Call
123.	Rear mainshaft snap ring	1988-89 C/K		8672928	Call
		1990-07 C/K/Silverado		23049936	Call

GM Getrag - 1988 HM290 - 1989-90 5LM60 - 1991-92 NVG 5LM60 - 1993-2007 NV3500

Item #	Description	Application	Notes	GM Part#	ZBAG Part#
124.	Speed sensor reluctor wheel washer	1988-89 C/K		23049716	Call
125.	Speed sensor reluctor wheel	1988-90 All		8672207	Call
126.	Reverse idler front snap ring			23049746	Call
127.	Reverse idler washer locating pin				Call
128.	Reverse idler thrust washer	1988-89 C/K		23049744	Call
		1990-93 C/K 1990-93 S10		8672203	Call
		1994-2007 C/K/Silverado 1994-2004 S10		12545787	Call
129.	Reverse idler gear	1988-89 C/K	24 tooth, 2.362 wide	8672976	Call
		1990-93 C/K, S10	24 tooth 2.06 wide, 40mm shaft	8672202	Call
		1994-2007 C/K/Silverado 1994-2004 S10	24 tooth, 1.38 wide, 30mm shaft	12545784	Call
130.	Reverse idler gear needle bearing	1988-89 C/K		23049741	Call
		1990-93 C/K, S10		8672201	Call
		1994-2007 C/K/Silverado 1994-2004 S10		12547410	Call
131.	Reverse idler gear shaft	1988-89 C/K		8672977	Call
		1990-93 C/K, S10		8672200	Call
		1994-2007 C/K/Silverado 1994-2004 S10		12545781	Call
132.	Reverse idler gear retainer	1988-93 C/K		23049747	Call
		1994-2007 C/K/Silverado 1994-2004 S10		12545789	Call
133.	Reverse idler gear check ball	1994-2007 C/K/Silverado 1994-2004 S10	4mm	14080547 4741891	Call
134.	Reverse idler gear O-ring	1988-89 C/K 1990 S10		23049743	Call
135.	Reverse idler wave spring			12545785	Call
136.	Reverse idler rear thrust washer			12545786	Call
137.	Reverse idler rear snap ring			12545788	Call
138.	Reverse idler rear thrust washer			12545787	Call
139.	Counter shaft bearing	1988-90 C/K 1990 S10	1.02" id	23049623	308-338.KSE
		1991-07 All except 1996-98 C/K w/MG5	1.18" id	FC68336	FC67063
		1996-98 C/K, w/M50	1.30" id	12547321	FC68009
140.	Counter shaft	1988-90 C/K	34-28-22-14-14, 1.02" cluster bearing, 1" groove on 1/R gear	23049687	290-8R
		1991-93 C/K	34-28-22-14-14, 1.18" cluster bearing, 1" groove on 1/R gear, 5LM60-8	8677746	290-8AR
		1994-07 C/K/Silverado w/MG5	34-28-22-14, 1.18" cluster bearing, no groove on 1/R gear, 5LM60-8A	12545780	290-8BR
		1996-98 C/K, w/M50	34-28-23-15-14-43, 1.31" cluster bearings, short reverse, .25" groove between 1/R	12547403	290-8ER
		1990 S10	1.02" cluster bearing, 1" groove on 1/R gear	8672312	Call
		1991-93 S10	34-28-22-14-14-41, 1.18" cluster bearing, Use 290-8BR and change 5th gear	8677747	Call
		1994-2005 S10	34-28-23-15-14-37, 1.18" cluster bearings, short reverse, .25" groove between 1/R, 20912	12547404 12545803	290-8CR Or 290-8D37
		1994-2007 S10	34-28-23-15-14-37, 1.18" cluster bearings, long reverse, .25" groove between 1/R	12548347	290-8D37
		1994-2007 S10	34-28-23-15-14-43, 1.18" cluster bearings, long reverse, .25" groove between 1/R		290-8D43
Not Listed	Bearing kits	Application		w/o Blockers	w/blockers
		1990 S10	1.3" Wide input bearing, 0.9" wide output bearing 1.020" id counter shaft bearings	BK235A	BK235AWS
		1991-94 S10	0.9" Wide input/output bearings, 1 piece 1-2 blockers 1.18" id counter shaft bearings	BK235B	BK235BWS
		1995-2005 S10	0.9" Wide input/output bearings, 3 piece 1-2 blockers 1.18" id counter shaft bearings	BK235B	BK235DWS
		1988-89 C/K	1.3" Wide input/output bearings 1.020" id counter shaft bearings	BK235	BK235WS
		1989-91 C/K	1.3" Wide input bearing, 0.9" wide output bearing 1.020" id counter shaft bearings	BK235A	BK235AWS
		1992-1994 C/K	0.9" Wide input/output bearings, 1 piece 1-2 blockers 1.18" id counter shaft bearings	BK235B	BK235BWS
		1995, 1999-2004 C/K/Silverado 1996-98 C/K w/MG5 wide ratio 1996-98 C/K w/M50 close ratio	0.9" Wide input/output bearings, 3 piece 1-2 blockers 1.18" id counter shaft bearings 0.9" Wide input/output bearings, 3 piece 1-2 blockers 1.30" id counter shaft bearings	BK235B BK235E	BK235DWS BK235EWS

*** Call for availability on items that do not have a ZBAG part number listed ***